

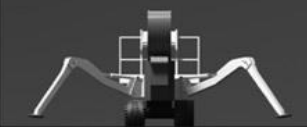


[www.ipaf.org](http://www.ipaf.org)

**It is easier to prepare  
and prevent, than to  
repair and repent!**

**Do you have a Rescue  
Plan?**

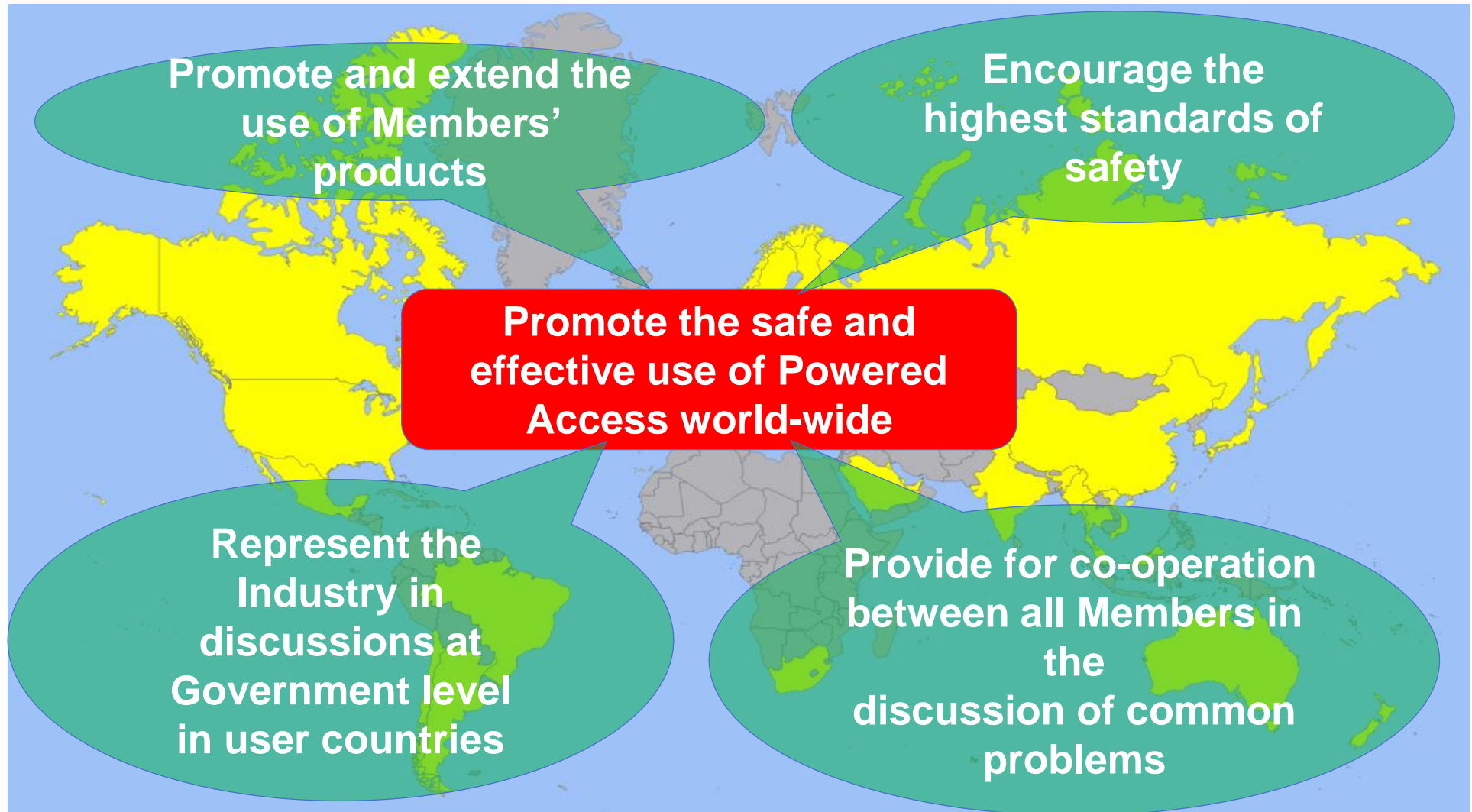
QUOTE: Ezra Taft Benson



# Aims and objectives



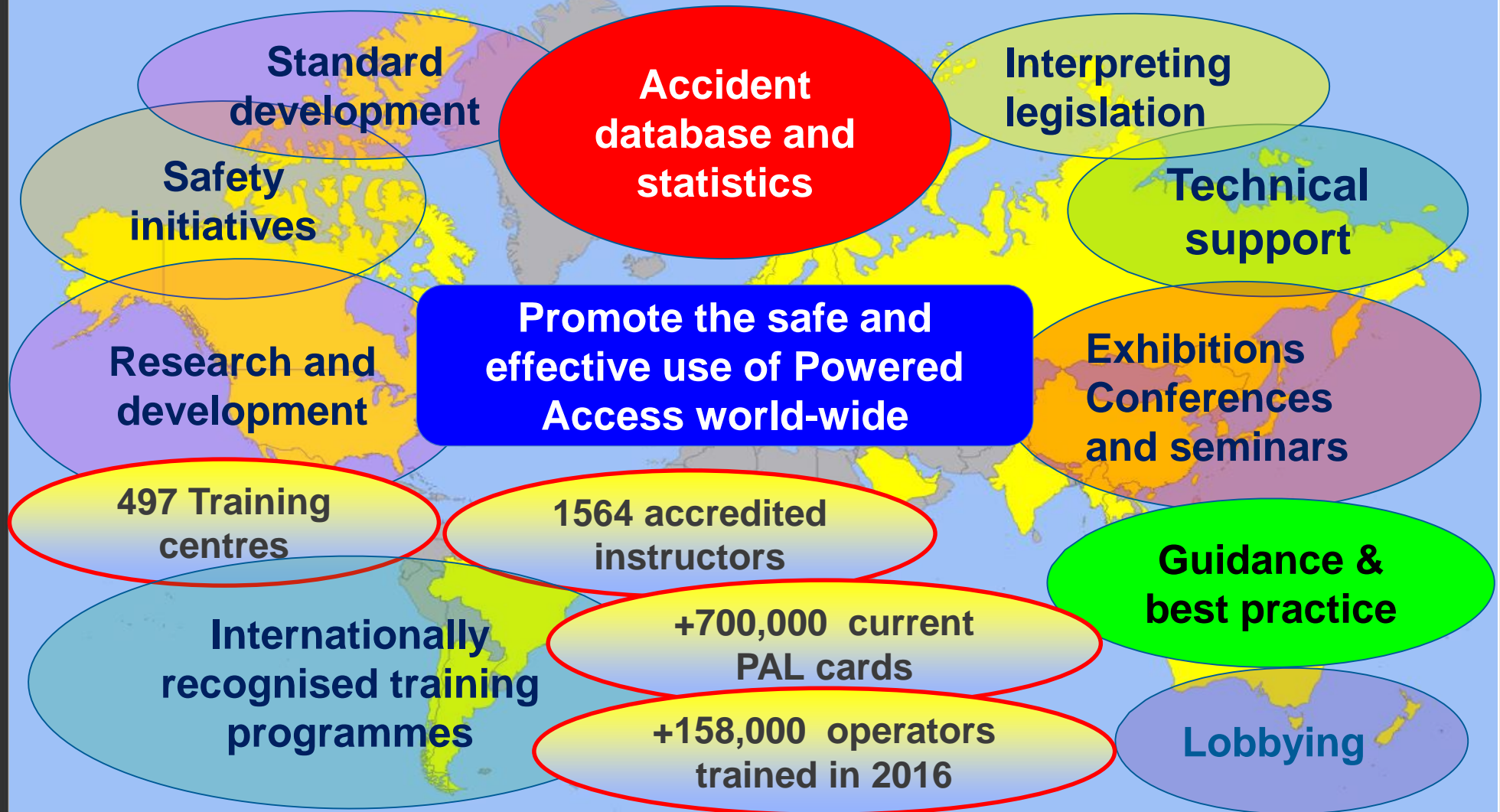
[www.ipaf.org](http://www.ipaf.org)



# What IPAF actually does



[www.ipaf.org](http://www.ipaf.org)



# IPAF Accident Reporting



Report an  
accident

[www.ipaf.org](http://www.ipaf.org)



## IPAF ACCIDENT REPORTING

Username

## Welcome to the IPAF ACCIDENT Database

All manufacturers, rental companies, contractors and users are encouraged to report:

1. Any known fatal and serious accidents involving MEWPs/AWPs or MCWPs worldwide, and

**Companies who report are:  
HELPING MAKE OUR INDUSTRY  
SAFER!**

obtain a secure password to access the confidential reporting database.

If you are unwilling to register to use this reporting system, please click on the box below to inform IPAF of any fatal accident involving powered access equipment.

**ANONYMOUS REPORTING**

Information entered into the database will be kept confidential and will be used strictly for the purposes of analysis and improving safety. Report accidents, and help save lives!

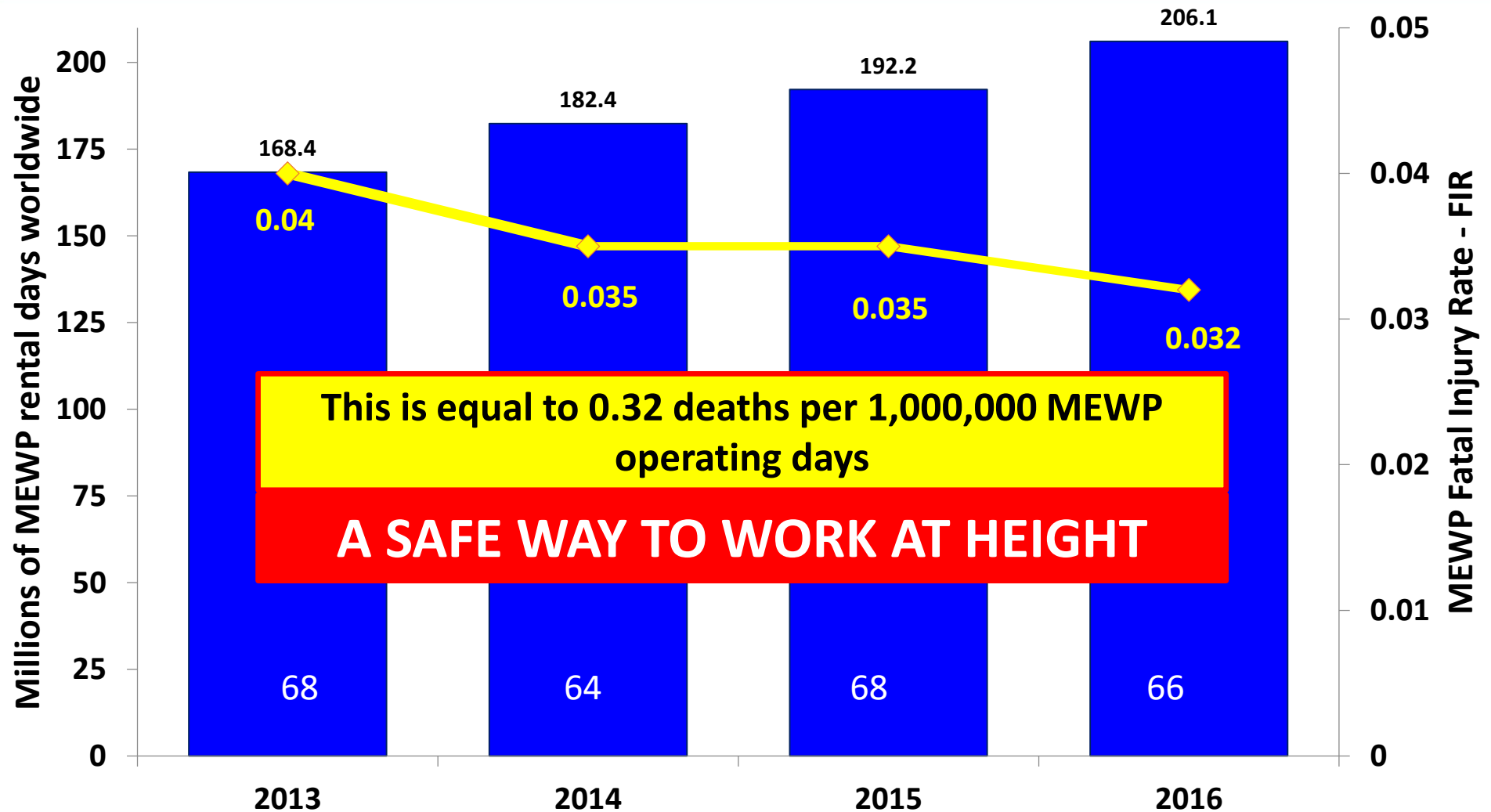
To see a video demonstrating how to use the accident reporting database watch this video:



# MEWP Industry Fatal Injury Rate - FIR



www.ipaf.org





# Back to Basics



www.ipaf.org



The world authority  
in powered access

## GET BACK TO BASICS TO STAY SAFE

www.ipaf.org/safe



Mobile Elevating Work Platforms (MEWPs) are designed to provide safe access for temporary work at height – but they are only a safe option if the work is planned and managed appropriately. Accidents can be prevented, through proper planning, risk assessment, and management and supervision of work at height, including operation by trained and familiarised operators.

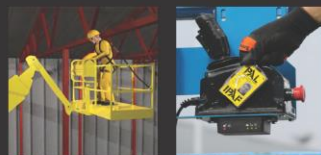
IPAF's 'Back to Basics' campaign identifies six recognised potential hazards that must be considered if accidents are to be prevented. These hazards can be avoided if users and operators follow essential safe-use practices.

### Assess Ground Conditions

Always check ground conditions as part of your site assessment to ensure proper MEWP selection, identify potential hazards, develop control measures, and provide the operator with warning and instructions before using the machine.

### Avoid Crushing Hazards

It is essential users and operators identify obstacles that may pose a crushing hazard in any direction of movement with the work platform. Follow the best practice guidance to avoid trapping and crushing injuries in a MEWP available from IPAF's website [www.ipaf.org/safe](http://www.ipaf.org/safe).



### Prevent Unauthorised Use

Consider using a machine capable of reading a Smart PAL Card so that only trained operators can activate machines. After use, always leave the machine in a safe and secure place and remove the key.



The world authority  
in powered access



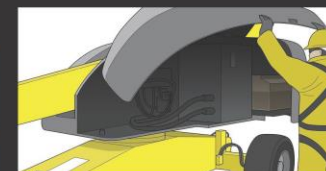
### Assess the Risks

It is a user's responsibility to ensure an appropriate risk assessment is performed by a competent person prior to the start of work. As well as doing pre-use checks of the MEWP, operators should also conduct a workplace inspection to identify any hazards prior to starting work.



### Avoid Electrocutation

Stay safe and keep any part of the MEWP away from the vicinity of power lines/energised conductors. Electrocutations can be prevented through proper planning, risk assessment, site management and continuous observation by the operator of potential electrical hazards.



### Inspect Prior to Use

Ensure operators perform checks of the MEWP; both visual and function tests before every use. Conduct daily inspections of MEWPs and ensure any issues are identified and addressed prior to operation.

Ref: BP UK04/17-002

For more information and  
safety advice please visit:  
[www.ipaf.org/safe](http://www.ipaf.org/safe) or  
contact us at [info@ipaf.org](mailto:info@ipaf.org)



### Resources:

[www.ipaf.org/andyaccess](http://www.ipaf.org/andyaccess)  
[www.ipaf.org/m4m](http://www.ipaf.org/m4m)  
[www.ipaf.org](http://www.ipaf.org)  
[www.ipaf.org/inspections](http://www.ipaf.org/inspections)  
[www.ipaf.org/guidance](http://www.ipaf.org/guidance)

# HELP – Getting the message out



[www.ipaf.org](http://www.ipaf.org)

**Manufacturers**

**Are your managers /  
supervisors trained?**

**Users**

**Hire  
Company**

**Training  
Centre**

# HELP – Getting the messages out



[www.ipaf.org](http://www.ipaf.org)



**ALWAYS PLAN FOR A SAFE RESCUE**



**Download your free Andy  
Access resources at [ipaf.org](http://ipaf.org)**



# Rescue Planning



[www.ipaf.org](http://www.ipaf.org)



- WHEN IS A RESCUE PLAN NEEDED?
- WHY DO YOU NEED A RESCUE PLAN?
- WHAT FACTORS NEED TO BE TAKEN INTO CONSIDERATION?
- HOW TO PLAN YOUR RESCUE
  - Ensure all MEWP operators are **trained and fully familiarised** with the MEWP (including use of auxiliary controls) and the work to be performed
  - **Communicate** the risk assessment and safe method of work
  - Familiarise **qualified persons on the ground** or working near the individual MEWP with the ground controls and allow them to practice lowering the raised platform

# EXAMPLE RESCUE PLAN



www.ipaf.org

## EMERGENCY SITUATION

## PROPOSED ACTION

### STEP 1

Failure of upper control functions while elevated

Where the normal upper control functions fail; the operator will use the upper auxiliary controls to lower the platform safely

### STEP 2

Failure of the operator to be able to operate the MEWP functions while elevated due to one of the following reasons:

- A.** Operator incapacitated
- B.** Both normal and auxiliary functions fail to operate from upper control station

Where the operator is incapable of lowering the raised platform using the upper controls; an appointed person familiarised in the use of the ground controls will lower the platform safely using the normal ground controls

### STEP 3

Failure of normal ground controls

Where the normal ground controls fail; an appointed person familiarised in the use of the ground controls will use the ground auxiliary controls to safely lower the platform

### STEP 4

Failure of ALL normal and auxiliary lowering functions

Where all normal and auxiliary functions have failed a qualified person, and a service technician should be contacted.

**Name:**

**Contact details:**

List the names of qualified ground person(s) on site, familiarised and authorised to lower the work platform in the event of an emergency or a machine malfunction

# CONSIDERATION FOR MID-AIR RESCUE



[www.ipaf.org](http://www.ipaf.org)

A mid-air, platform to platform rescue should only be considered in **exceptional circumstances** and only after:

- All normal and auxiliary lowering procedures have been attempted and the platform cannot be lowered.
  - Site management have contacted the appropriate service technician listed in the rescue plan, to report failure of normal and auxiliary lowering systems and request servicing assistance.
- ROPE EVACUATION is a **LAST RESORT** – Guidance is being written / discussed by IPAF and the SFPSPG. Watch the ipaf website.

[www.ipaf.org](http://www.ipaf.org)

# Finally - Please Report Accidents



www.ipaf.org



INTERNATIONAL POWERED  
ACCESS FEDERATION

About IPAF

Training

IPAF Rental+

Publications  
& Films

Services

Membership  
Directory

Resources



Verify PAL Card



## Welcome to the IPAF Website



### News from IPAF - Click here

IPAF launches new audit regime for UK rental members  
IPAF Annual Report 2016  
New IPAF President wants powered access to raise its  
game on apprenticeships  
UK Strategic Forum Plant Safety Group MEWAG

### International Powered Access Federation

The International Powered Access Federation (IPAF) promotes the safe and effective use of powered access equipment worldwide in the widest sense -- through providing technical advice and information, through influencing and interpreting legislation and standards, through its safety initiatives and training programmes. It is a not-for-profit organisation owned by its members who include manufacturers, rental companies, contractors and users.

#### New to powered access?

If you are new to powered access, this website offers some starting points. See the FAQs. You can refer to a simple industry document to understand what training and familiarisation is necessary. IPAF's technical guidance notes offer practical advice on using harnesses, assessing ground conditions and avoiding trapping. Visit the Film section to learn about the correct use of equipment and view the award-winning "Spot the Mistake" video.

#### IPAF Training

If you are looking for training -- the IPAF training programme for platform operators is certified by TÜV as conforming to ISO 18878. Successful trainees are awarded the PAL Card (Powered Access Licence) as proof of training. Find your nearest training centre using the locator.



#### Members Only Login

Username:

Password:

LOGIN →

#### PAL Cards Worldwide

0703529

search www.ipaf.org



Report an  
accident



Join Today



Events



News



Training Centre  
Locator



PAL Card



Online Survey



Spread the load!

**access**  
INTERNATIONAL



# Thank you for listening



[www.ipaf.org](http://www.ipaf.org)



[rdj@ipaf.org](mailto:rdj@ipaf.org)

Office: **+44 (0)1539 566 700**

Mobile: **+44 (0)7788 78 73 78**