

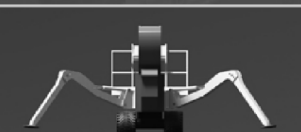
# IPAF Middle East Convention 2017

November 7, 2017 - Abu Dhabi - UAE

## MCWPs: Working Safely on Façades

*Angel Ibanez*

IPAF Global Representative for MCWPs and  
related products



**What is an MCWP?**

**Regulations**

**Applications**

**Advantages**

**Hazards**

**How IPAF can help you**

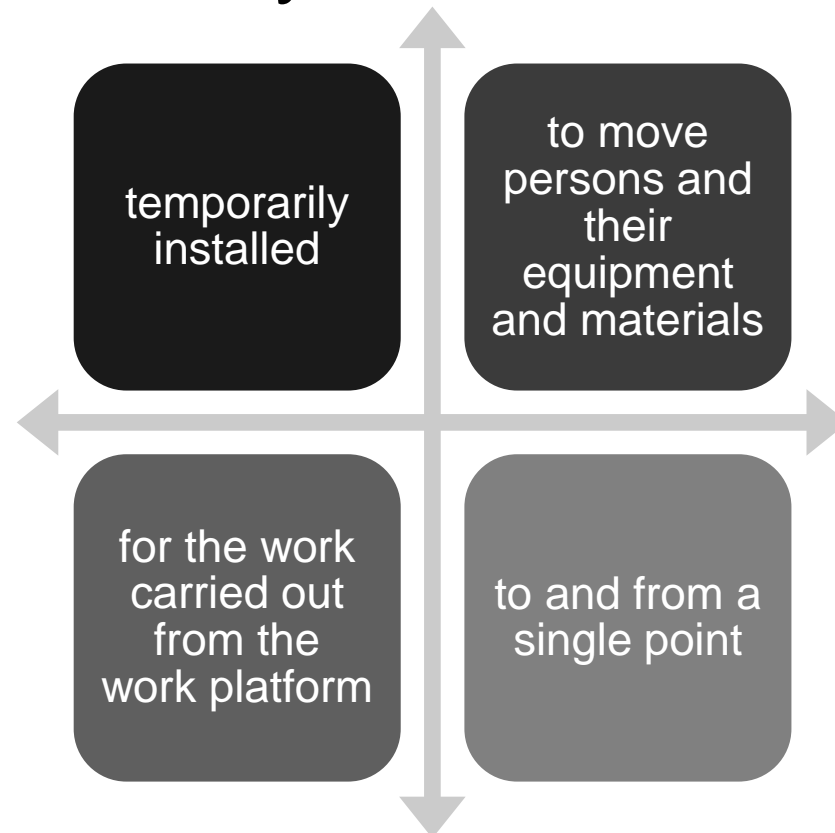
# What is an MCWP?



[www.ipaf.org](http://www.ipaf.org)

## MCWP - Mast Climbing Work Platform

Powered vertical access system:



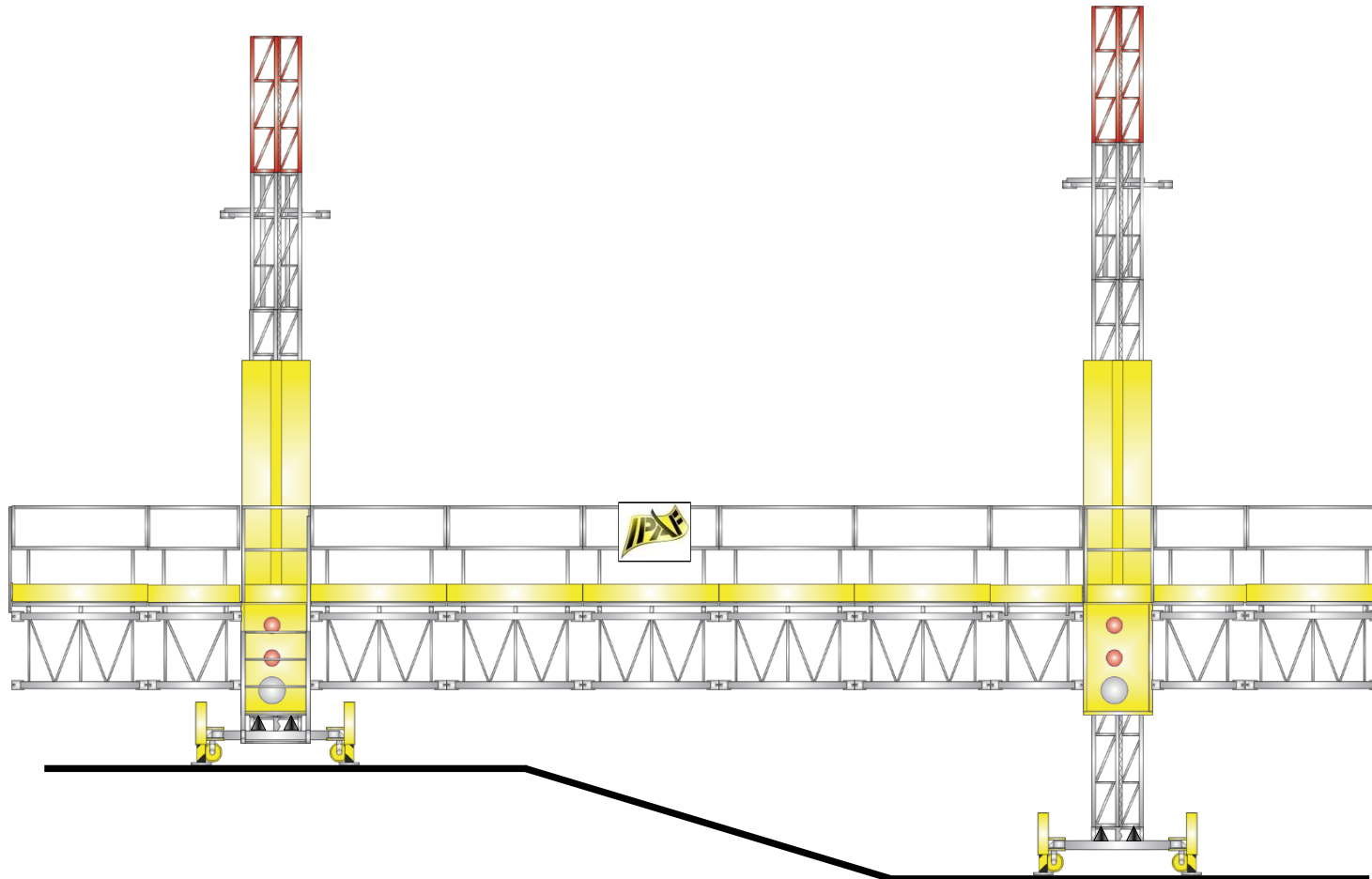
# What is an MCWP?



[www.ipaf.org](http://www.ipaf.org)

## Multiple configurations

## Twin mast



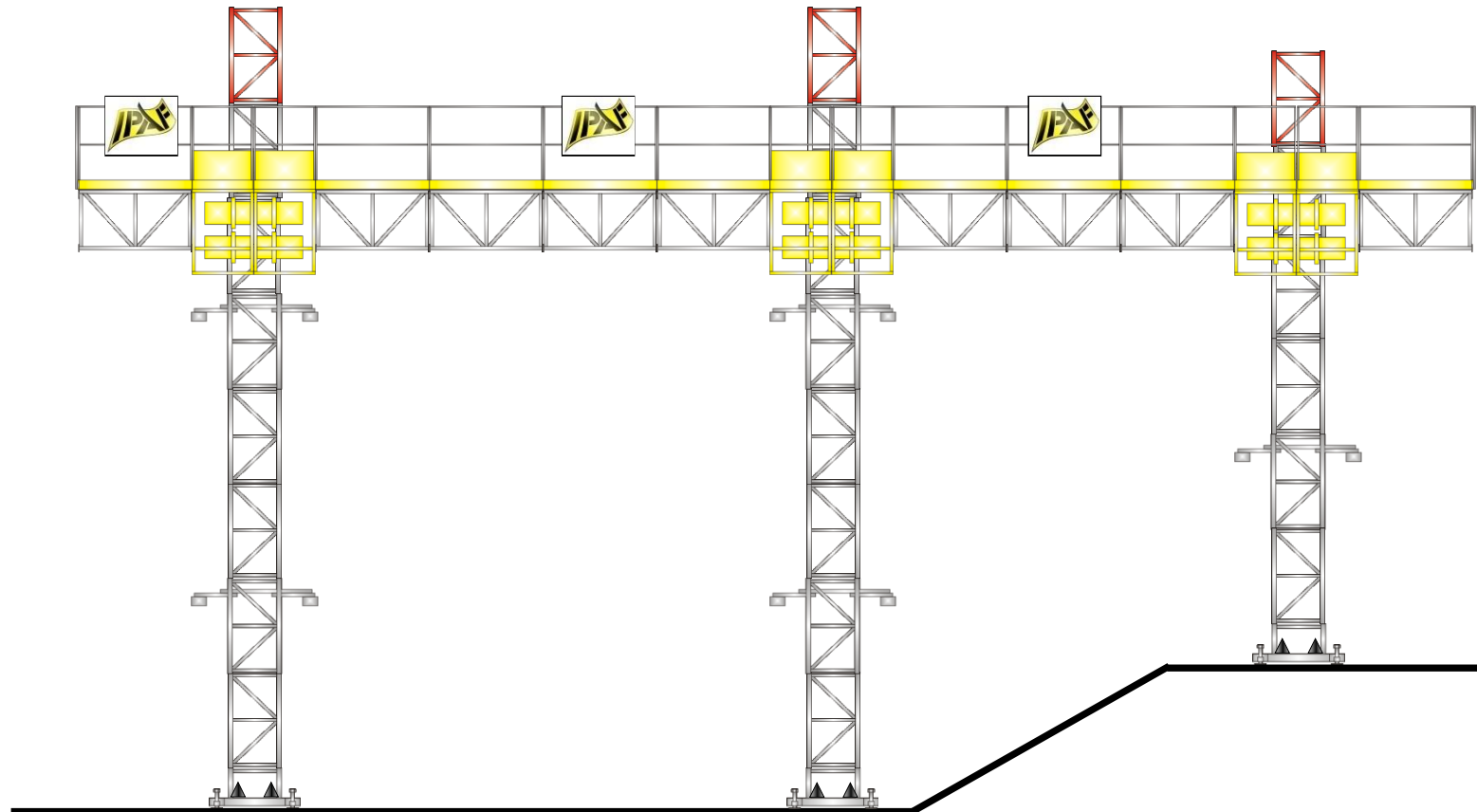
# What is an MCWP?



[www.ipaf.org](http://www.ipaf.org)

Multiple configurations

**Multi mast**



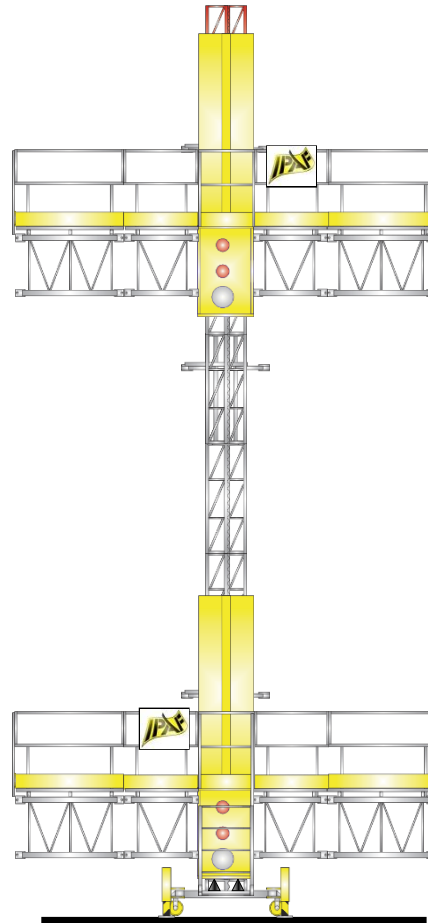
# What is an MCWP?



[www.ipaf.org](http://www.ipaf.org)

Multiple configurations

**Multi platform**



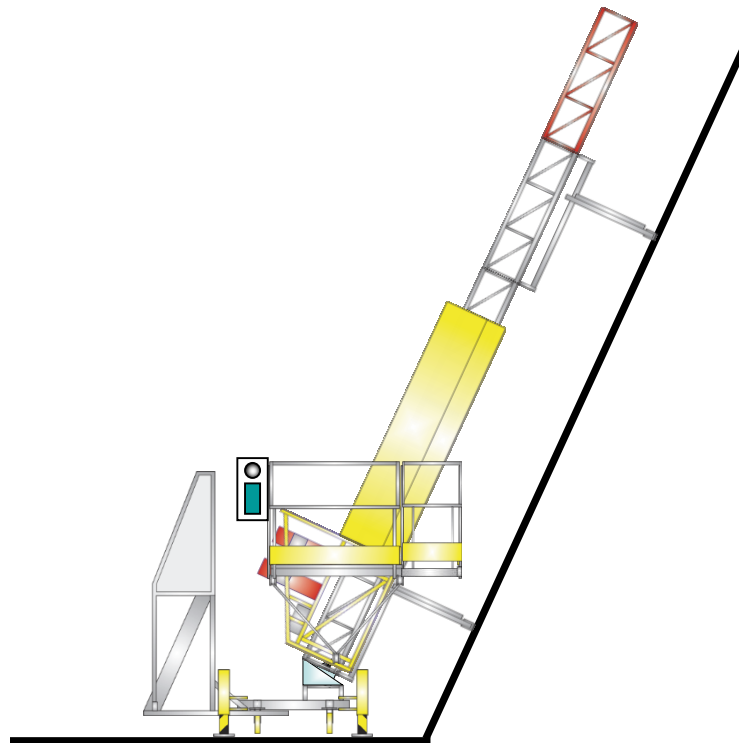
# What is an MCWP?



[www.ipaf.org](http://www.ipaf.org)

Multiple configurations

**Inclined mast**

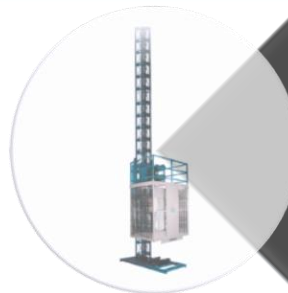


# What is an MCWP?

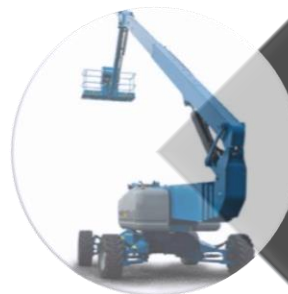


[www.ipaf.org](http://www.ipaf.org)

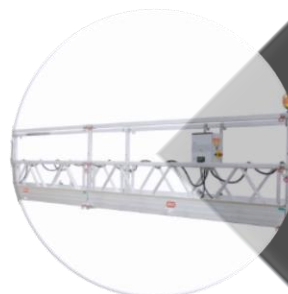
An MCWP  
IS **NOT**



a Hoist



an Aerial  
Work  
Platform



a Swing  
Stage  
Platform



# Regulations



[www.ipaf.org](http://www.ipaf.org)

## **European Standard EN 1495**

Specifies the special safety requirements for the design.

## **British Standard BS 7981**

Code of practice for the installation, maintenance, thorough examinations and safe use.

## **American Standard ANSI A92.9**

American design standard for MCWPs.



# Applications



[www.ipaf.org](http://www.ipaf.org)

Bricklaying

Glass  
installation

Refurbishment

Painting

Cleaning

Over cladding

Stucco

Fabric repair

Curtain walling



# Applications



[www.ipaf.org](http://www.ipaf.org)





# Applications



[www.ipaf.org](http://www.ipaf.org)





# Applications



[www.ipaf.org](http://www.ipaf.org)



# Applications



[www.ipaf.org](http://www.ipaf.org)





# Applications



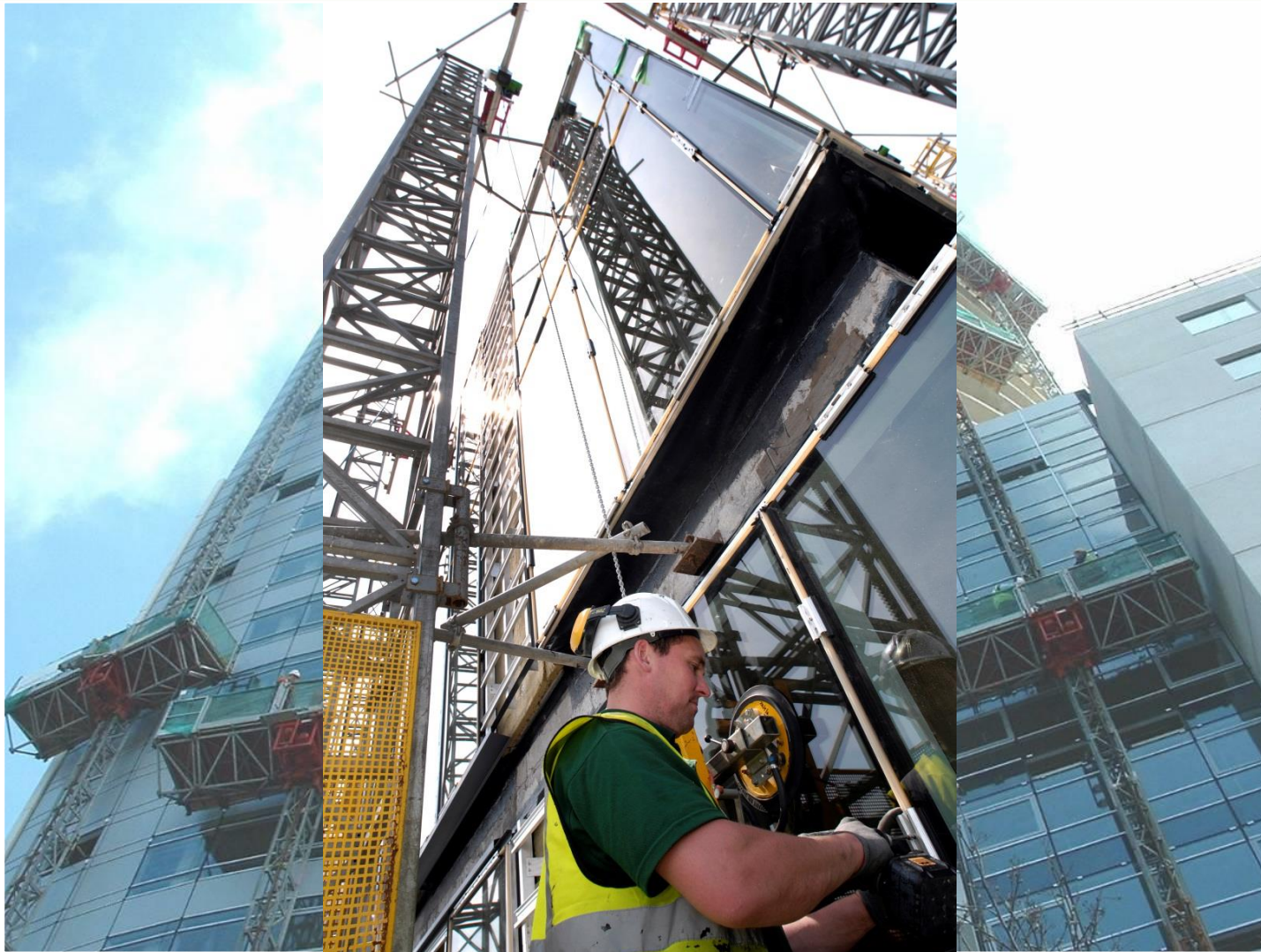
[www.ipaf.org](http://www.ipaf.org)



# Applications



[www.ipaf.org](http://www.ipaf.org)





# Applications



[www.ipaf.org](http://www.ipaf.org)



# Applications



[www.ipaf.org](http://www.ipaf.org)





# Applications



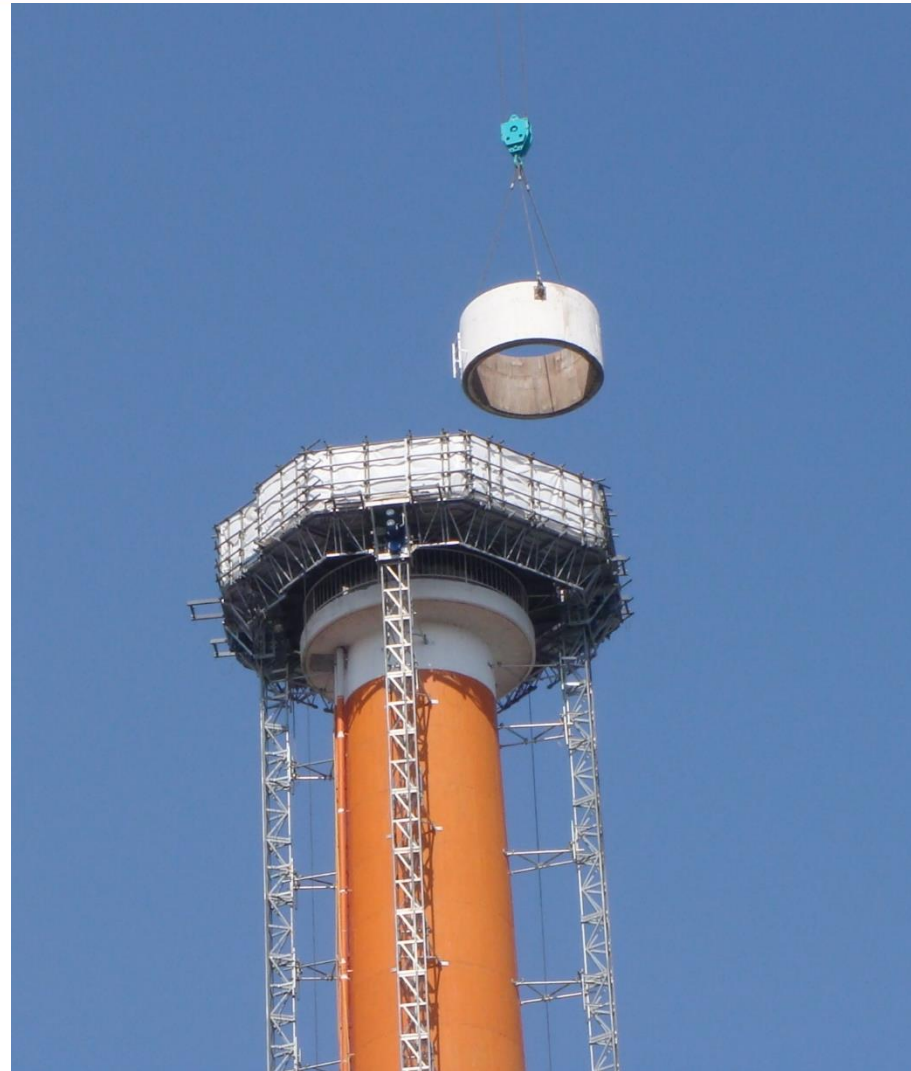
[www.ipaf.org](http://www.ipaf.org)



# Applications



[www.ipaf.org](http://www.ipaf.org)



# Advantages



# Advantages



[www.ipaf.org](http://www.ipaf.org)

## Quicker to erect & dismantle



# Advantages



[www.ipaf.org](http://www.ipaf.org)

## Flexible configurations





# Advantages



[www.ipaf.org](http://www.ipaf.org)

## Increase productivity



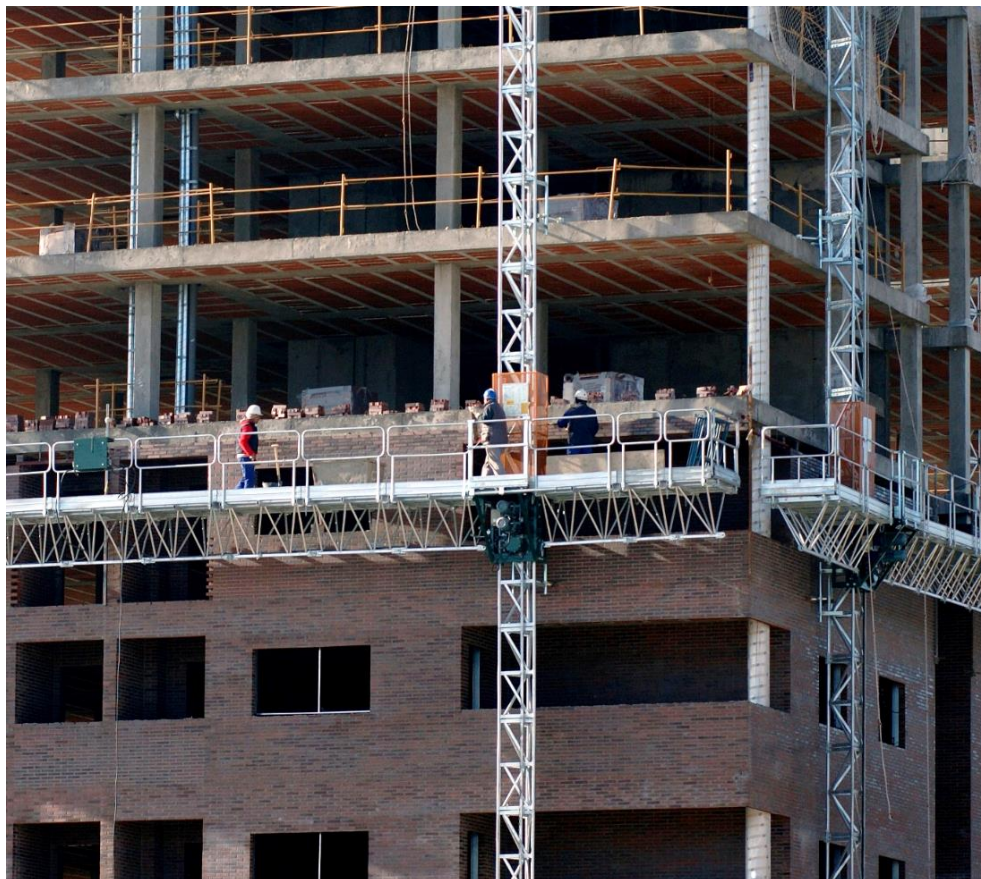


# Advantages



[www.ipaf.org](http://www.ipaf.org)

## Reduce risk of injuries to workers



# Advantages



[www.ipaf.org](http://www.ipaf.org)

- **Good image for the Company**
- **Minimal footprint and visual impact...**

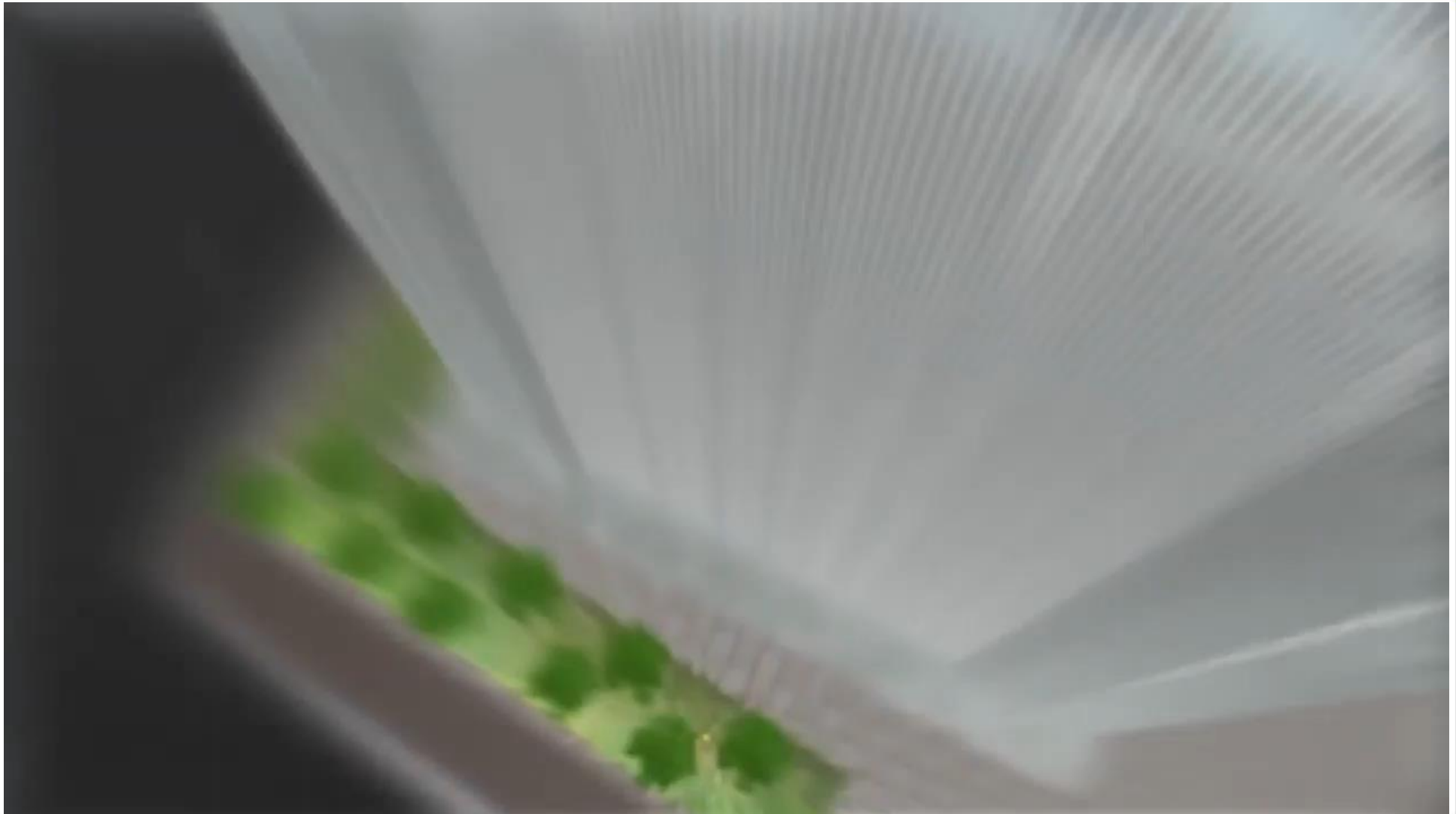


... and MORE!

# Advantages



[www.ipaf.org](http://www.ipaf.org)



## Main hazards

Removed  
guards and  
exposed edges

Overloading



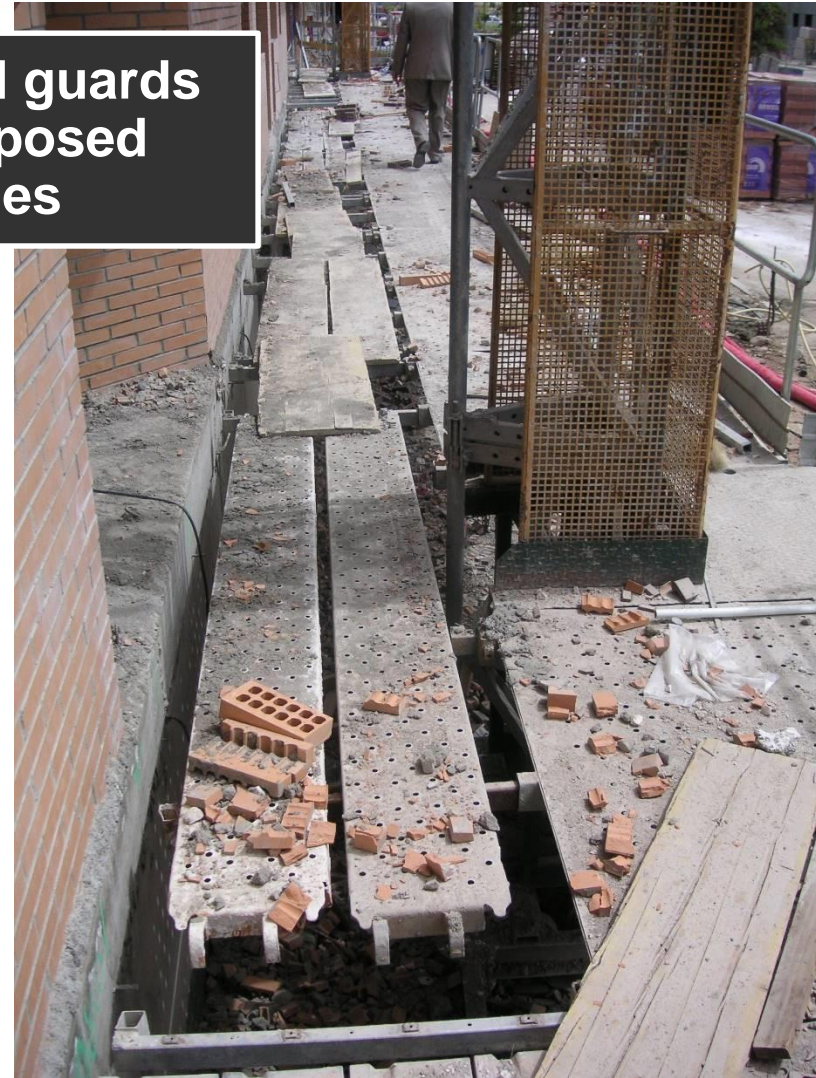
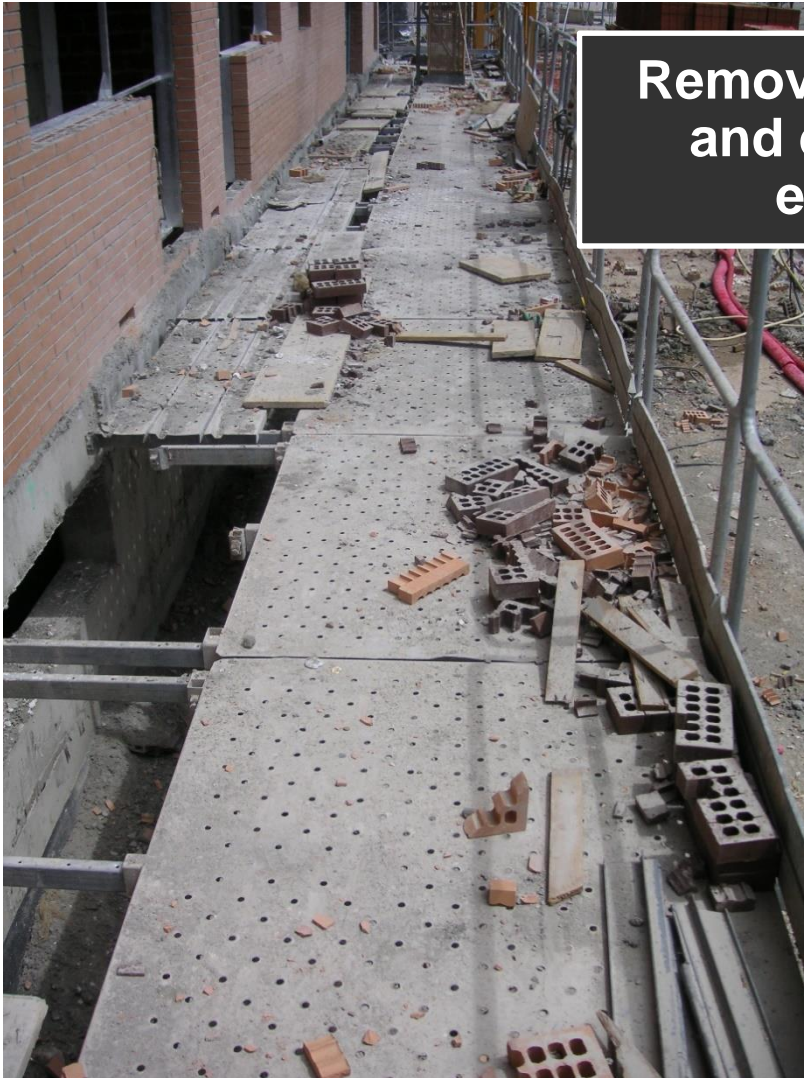
Faulty  
configuration

Hit with  
obstacles



# Hazards

Removed guards  
and exposed  
edges



# Hazards



[www.ipaf.org](http://www.ipaf.org)



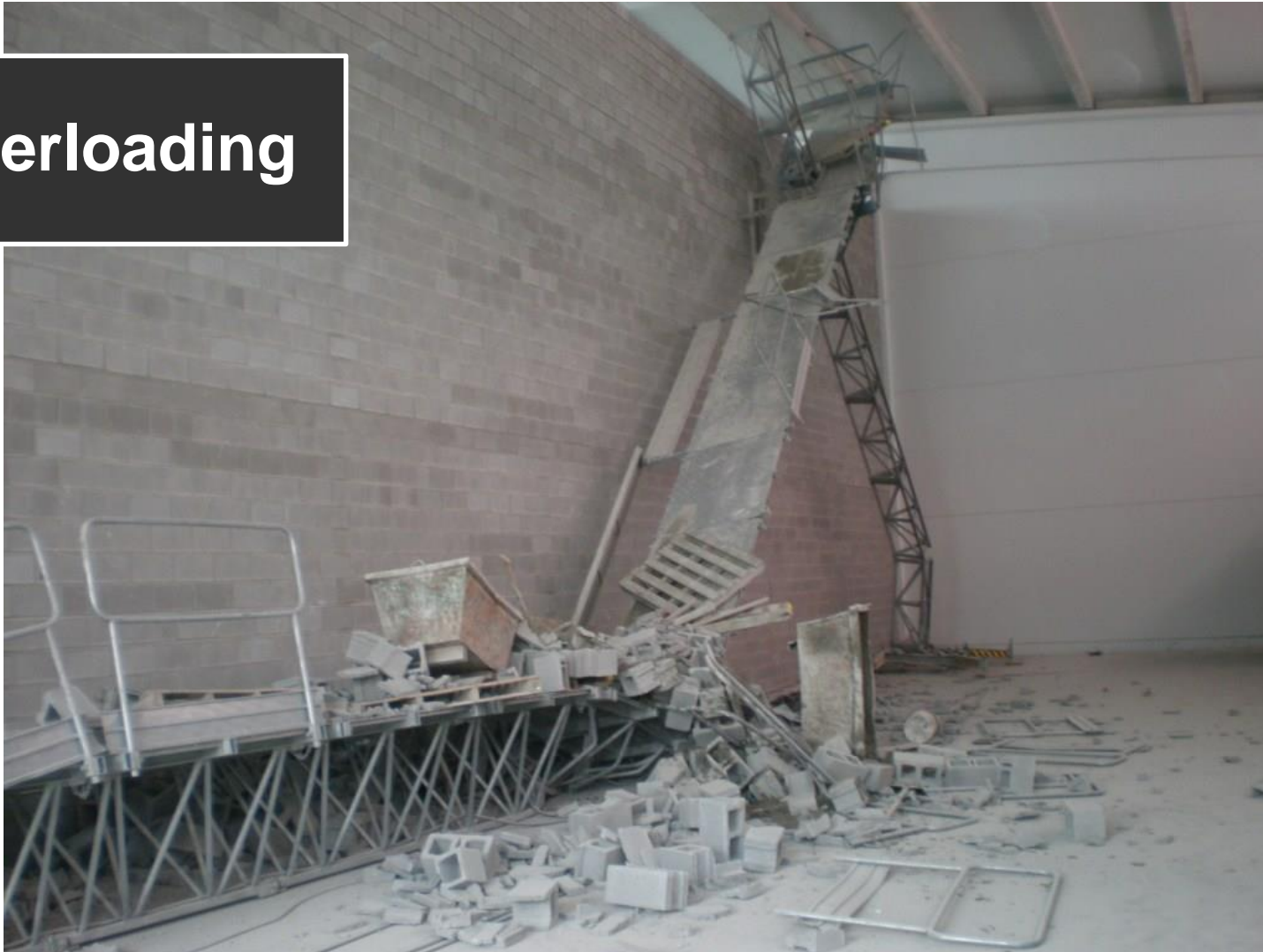


# Hazards



[www.ipaf.org](http://www.ipaf.org)

## Overloading



# Hazards



[www.ipaf.org](http://www.ipaf.org)

## Overloading





# Hazards



[www.ipaf.org](http://www.ipaf.org)

**Hit with  
obstacles**



# Hazards



[www.ipaf.org](http://www.ipaf.org)



**Faulty  
configuration**



# Hazards



[www.ipaf.org](http://www.ipaf.org)



**Faulty  
configuration**

# Hazards



[www.ipaf.org](http://www.ipaf.org)



**Others: lack of  
maintenance**



# Hazards



[www.ipaf.org](http://www.ipaf.org)



**Others: lack of  
maintenance**

# Hazards



[www.ipaf.org](http://www.ipaf.org)



**Others: bad  
operation**

**Lack of training**  
on the  
**installation & use**  
is a  
**critical factor**  
in most  
**mast climber incidents**

# Hazards



[www.ipaf.org](http://www.ipaf.org)



&

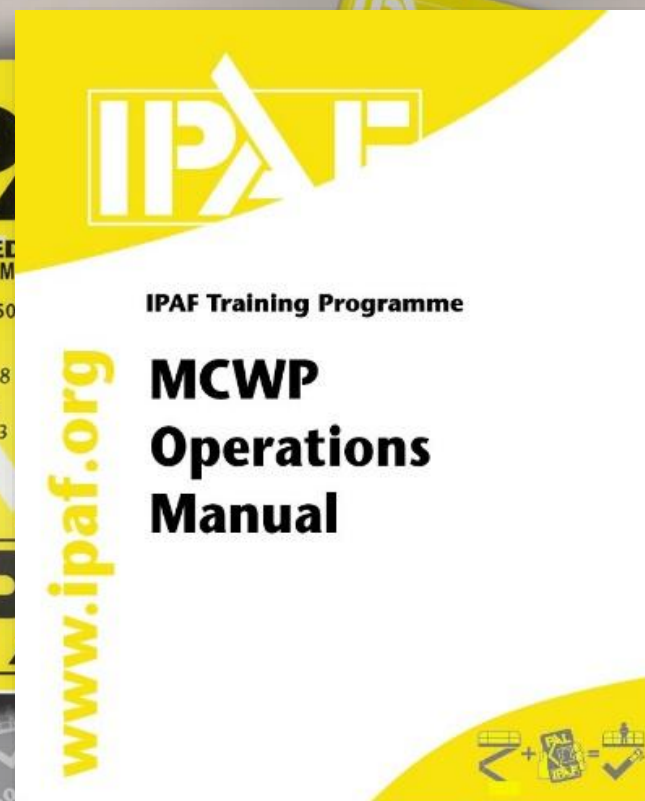




# How IPAF can help you



[www.ipaf.org](http://www.ipaf.org)



# How IPAF can help you



[www.ipaf.org](http://www.ipaf.org)

## **PAL Grades/Categories for Mast Climbing Work Platforms**

<b>Title</b>	<b>Licence Grade</b>
<b>Operator</b>	<b>OP</b>
<b>Mobile Operator</b>	<b>OP(M)</b>
<b>Demonstrator</b>	<b>D</b>
<b>Installer</b>	<b>INST</b>
<b>Advanced Installer</b>	<b>INST(A)</b>
<b>Trainer</b>	<b>T</b>

# How IPAF can help you



[www.ipaf.org](http://www.ipaf.org)

**IPAF's  
PAL Card  
is getting  
Smarter!...**



**...it can make the  
industry safer by  
controlling access  
to machines**



[www.ipaf.org/pal](http://www.ipaf.org/pal)

Access control

Verify if pre-use checks

Electronic logbook

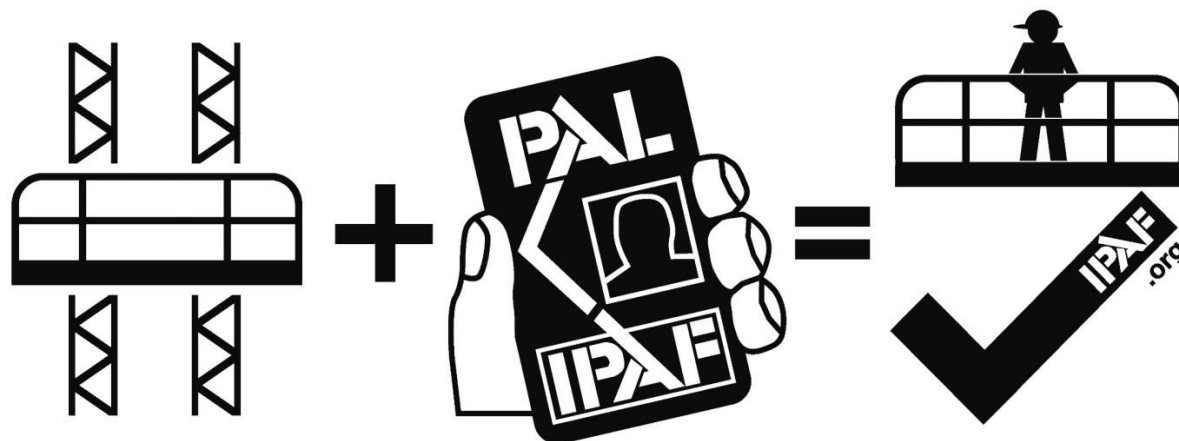
Can be integrated



# How IPAF can help you



[www.ipaf.org](http://www.ipaf.org)



**MCWPs**  
**the smart and safe**  
**way of working on façade**