



# IPAF 2019 ELEVATION

the Good, the Bad and  
the Ugly

**LearningforHireLtd**

Training, Assessment & Compliance



**Member**

# The Challenge

**LearningforHireLtd**

Training, Assessment & Compliance



**Member**

# Customer Owned Machinery

**LearningforHireLtd**

Training, Assessment & Compliance



**Member**







# Ready for Hire Equipment

**LearningforHireLtd**

Training, Assessment & Compliance



**Member**



**LearningforHireLtd**

Training, Assessment & Compliance



**Member**







**LearningforHireLtd**

Training, Assessment & Compliance



**Member**

















 L<sub>V</sub>  
**105** dB

**Genie**  
A TEREX COMPANY


Model: Z-45/25  
Serial number: Z452507B-520  
Model year: 2007  
Electrical schematic number: ES0270  
Machine unladen weight: 14,050 lbs / 6,373 kg  
Form line: add 764 lbs/347 kg to weight

Rated work load (including occupants):  
500 lbs / 227 kg

Maximum number of platform occupants: 2  
Maximum allowable side force: 90 lbs / 400 N  
Maximum allowable inclination of the chassis:  
2.5° swing & 4.5° pendulum to its structure  
Maximum lift speed: 28 mph / 12.5 m/s  
Maximum platform reach:  
25.5 ft / 7.85 m

Groundability: 40%  
Control system: 12 V, 8 amp  
The machine complies with:  
EN 280

Genie Industries  
15540 145th Street  
Houston, TX 77060  
USA

 **CE** 07



# Skills Shortfall

**LearningforHireLtd**

Training, Assessment & Compliance



**Member**



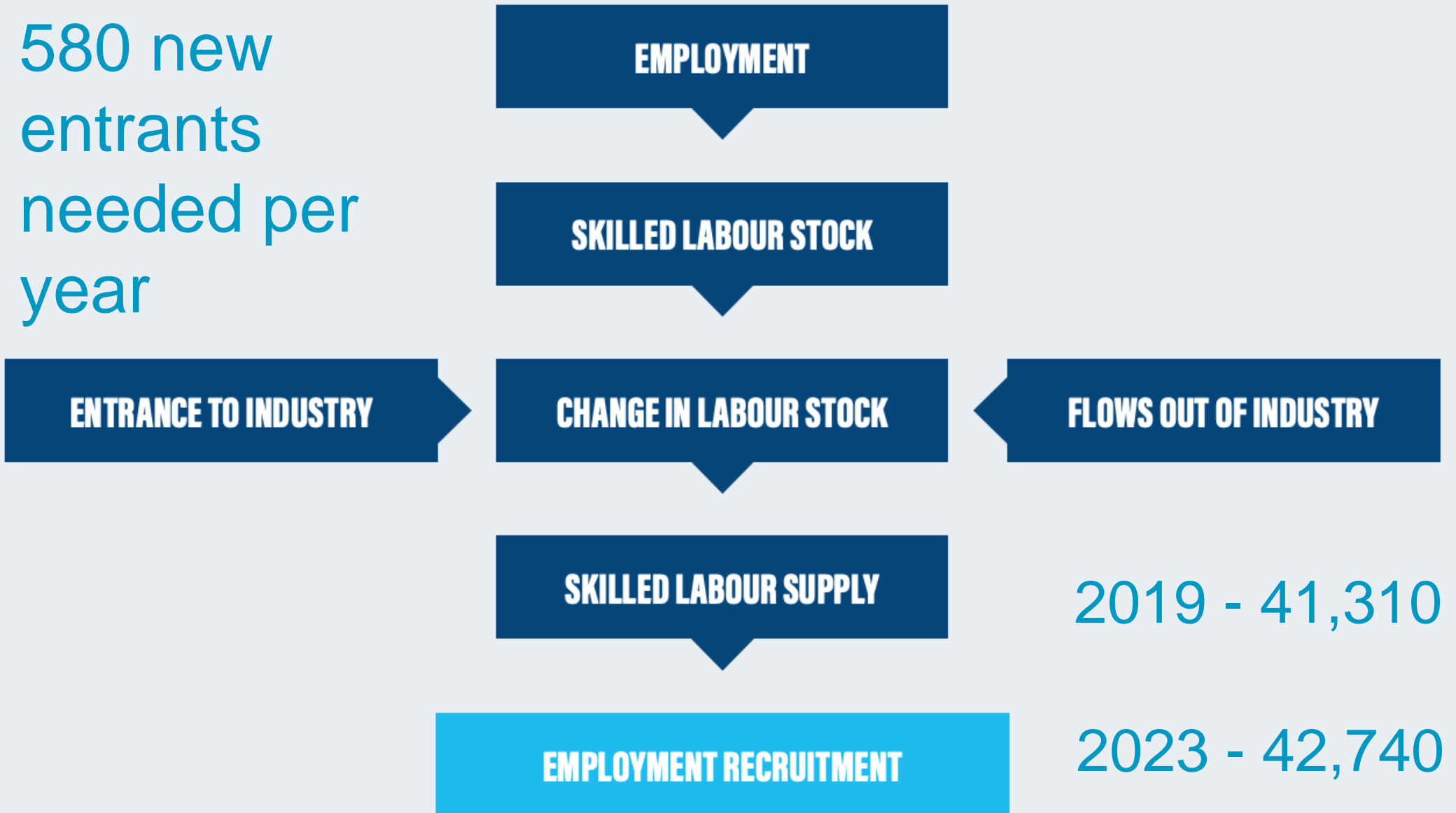
---

CITB RESEARCH

# CONSTRUCTION SKILLS NETWORK



580 new  
entrants  
needed per  
year



# Engineering Team Characteristics....

**A varied bunch...of mentors and trainees**

**LearningforHireLtd**

Training, Assessment & Compliance



**Member**

Ah hergy dergy burgy





# BLFs

**LearningforHireLtd**

Training, Assessment & Compliance



**Member**



# HAGHs

**LearningforHireLtd**

Training, Assessment & Compliance



**Member**



# AGNIs





# Two Sheds

**LearningforHireLtd**

Training, Assessment & Compliance



**Member**

# WIWAs

**LearningforHireLtd**

Training, Assessment & Compliance



**Member**



# Carp Fishermen

**LearningforHireLtd**

Training, Assessment & Compliance



**Member**





# OHMs

**LearningforHireLtd**

Training, Assessment & Compliance



**Member**



# Poker Players

**LearningforHireLtd**

Training, Assessment & Compliance



**Member**



# Shrinking Violet

**LearningforHireLtd**

Training, Assessment & Compliance



**Member**





# SBDs

**LearningforHireLtd**

Training, Assessment & Compliance



**Member**



# GMATs

**LearningforHireLtd**

Training, Assessment & Compliance



**Member**



# Barriers to Learning

**LearningforHireLtd**

Training, Assessment & Compliance



**Member**

# British Dyslexia!

Association

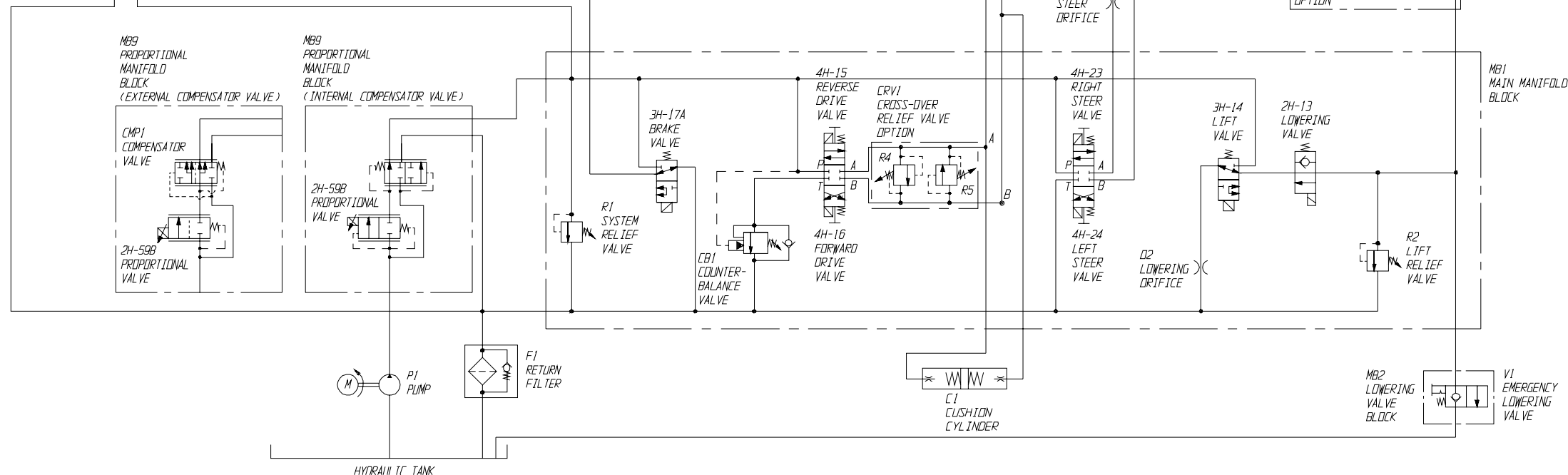
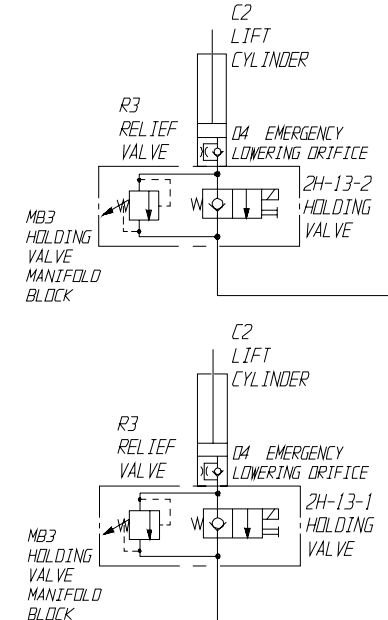
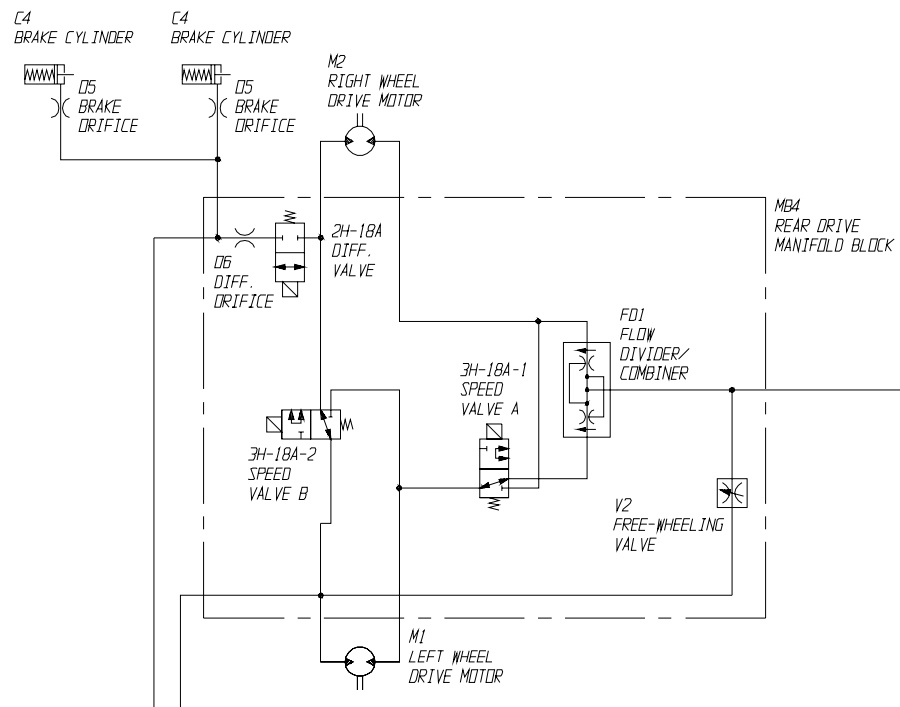
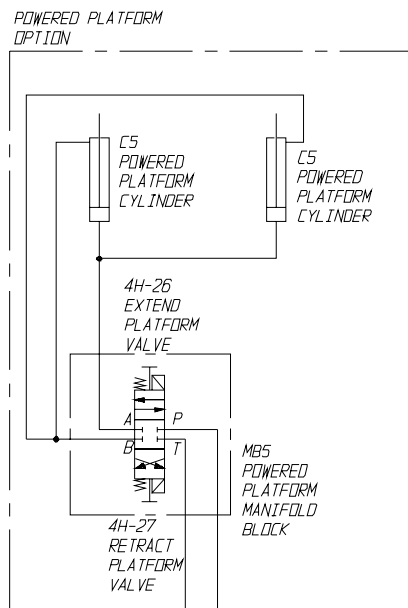
**LearningforHireLtd**

Training, Assessment & Compliance



**Member**





# IPAF Service Engineer Roadmap

**LearningforHireLtd**

Training, Assessment & Compliance

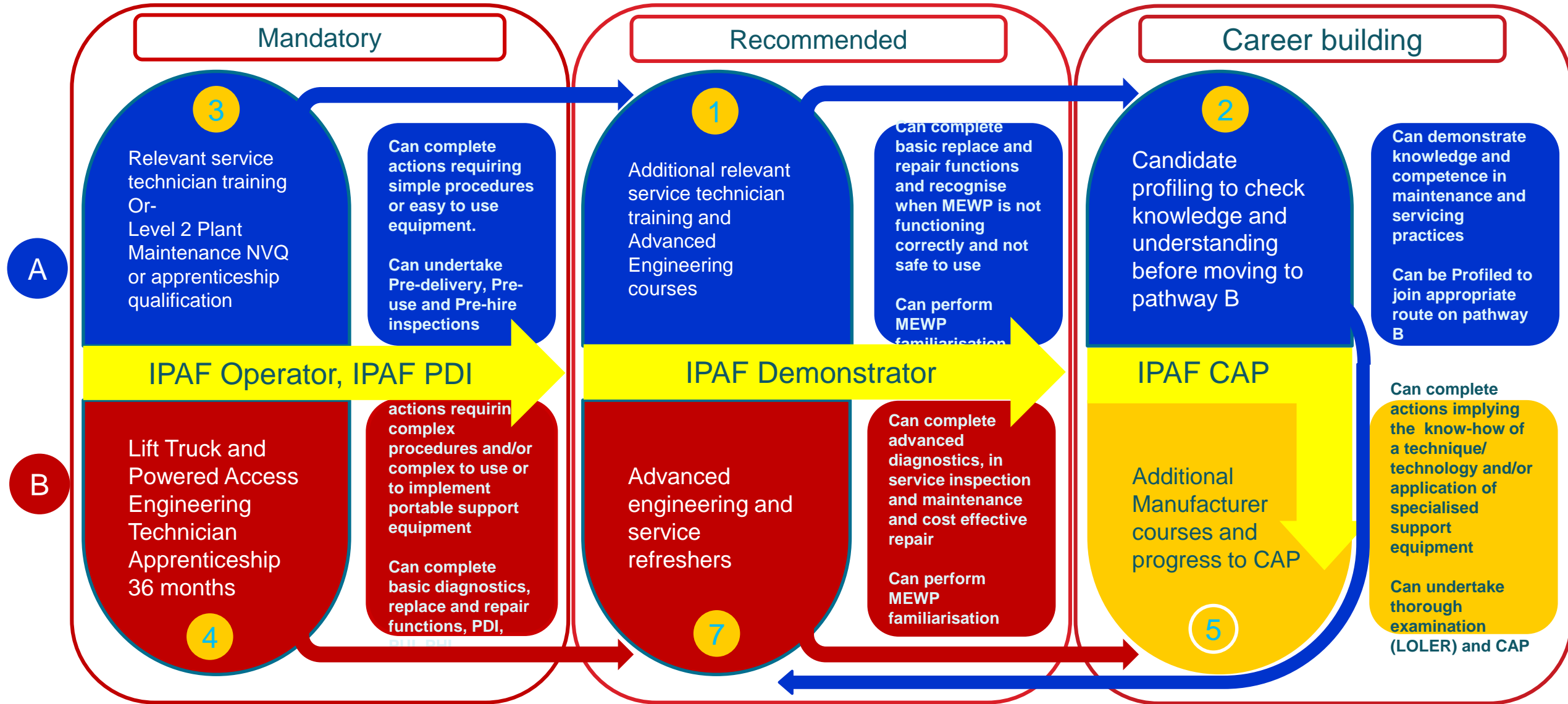


**Member**

# IPAF Service Engineer Roadmap



= Maximum number of CAP points available on completion of section



A

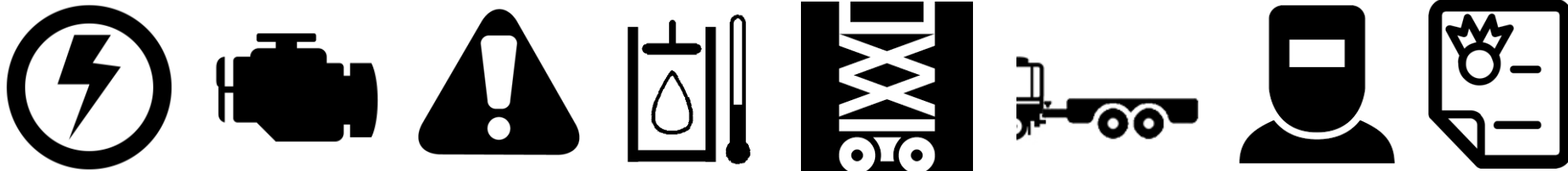
**PATHWAY A** –Aimed at those new to powered access and hire rental who may undertake some maintenance/servicing of equipment or those working in a maintenance role without formal qualification.

B

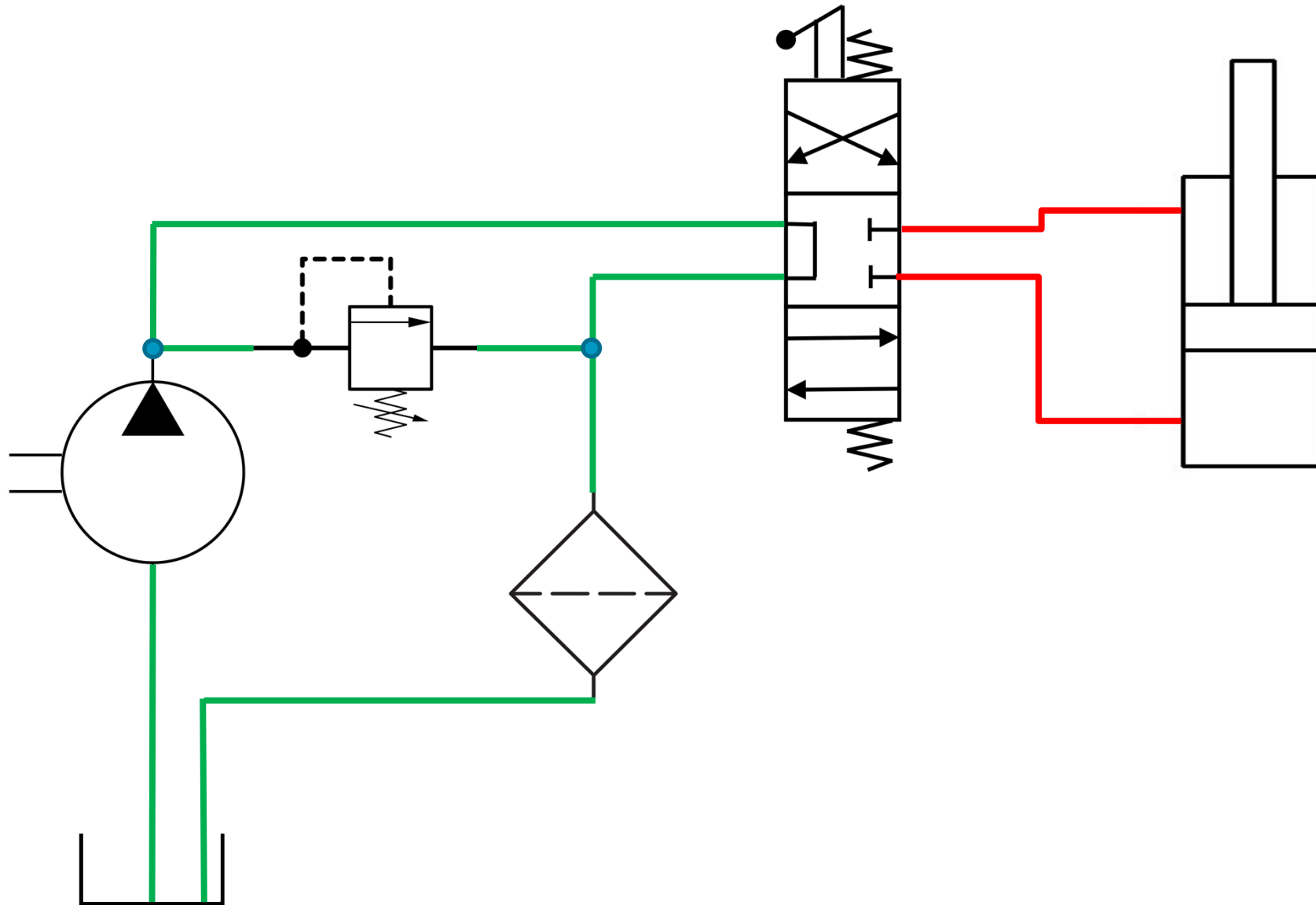
**PATHWAY B** –Aimed at those looking to achieve an engineering apprenticeship / qualification either straight from school or those working in industry with prior knowledge



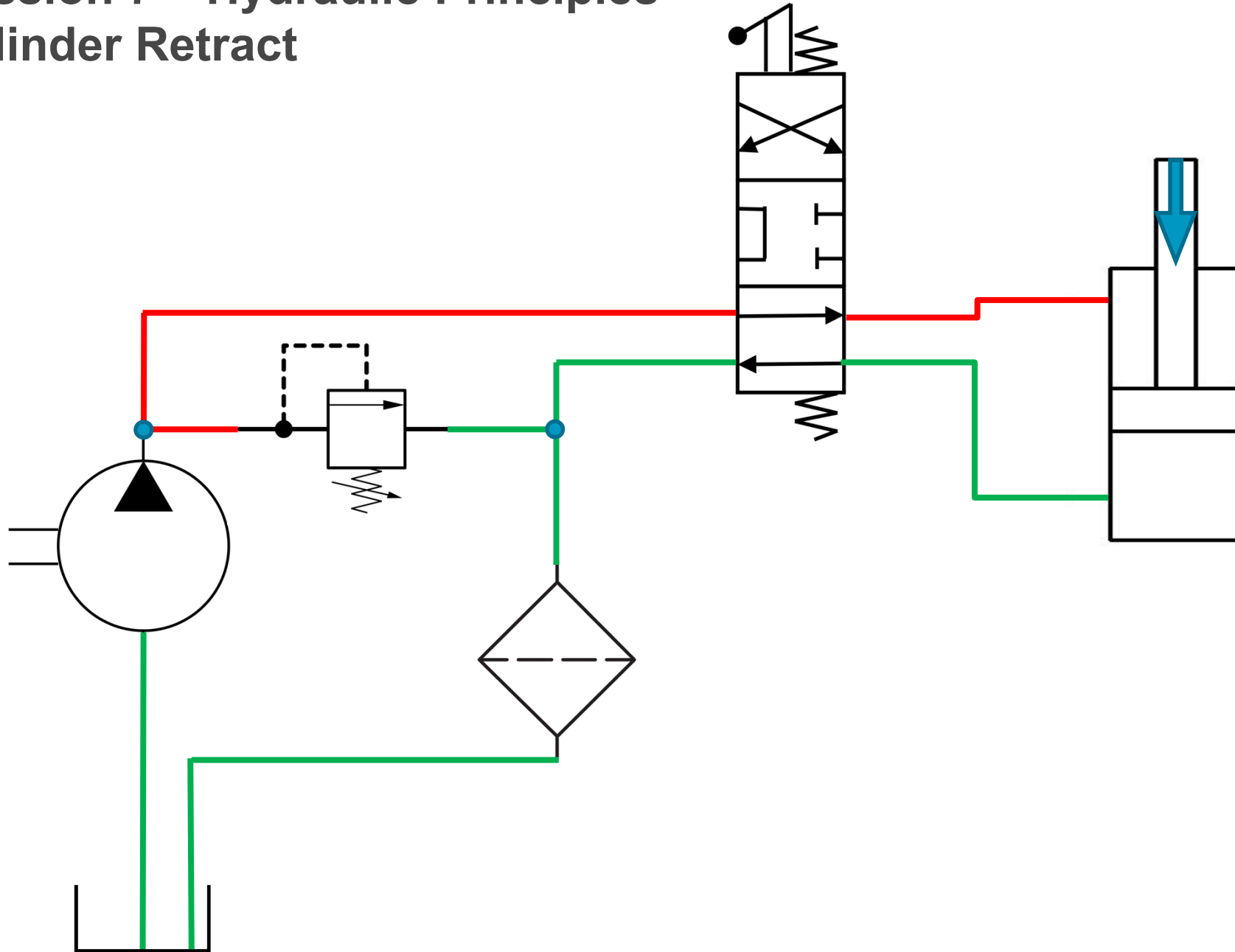
# ServiceTech Training Programme



## Session 7 – Hydraulic Principles – Neutral Circuit

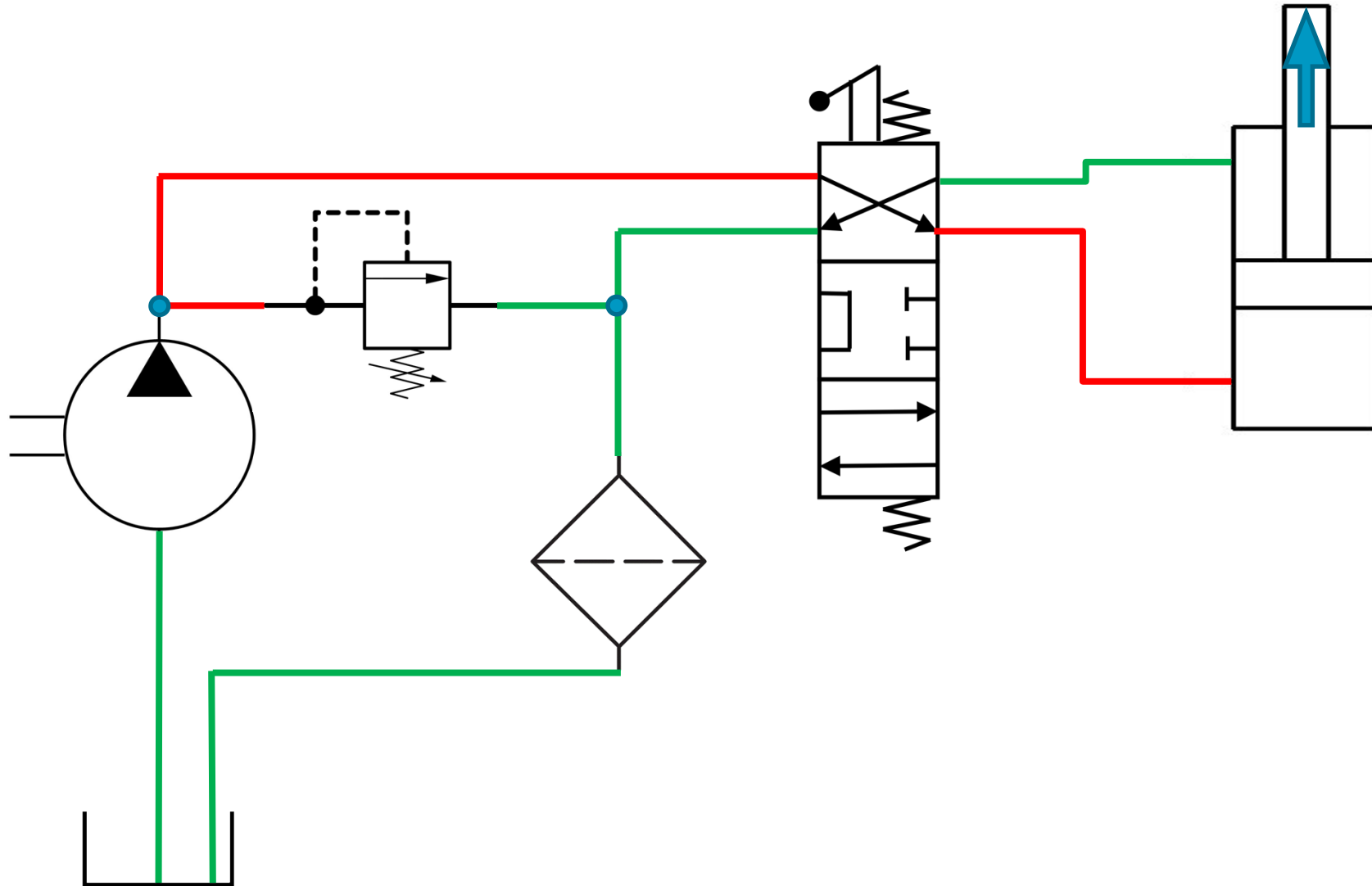


## Session 7 – Hydraulic Principles – Cylinder Retract

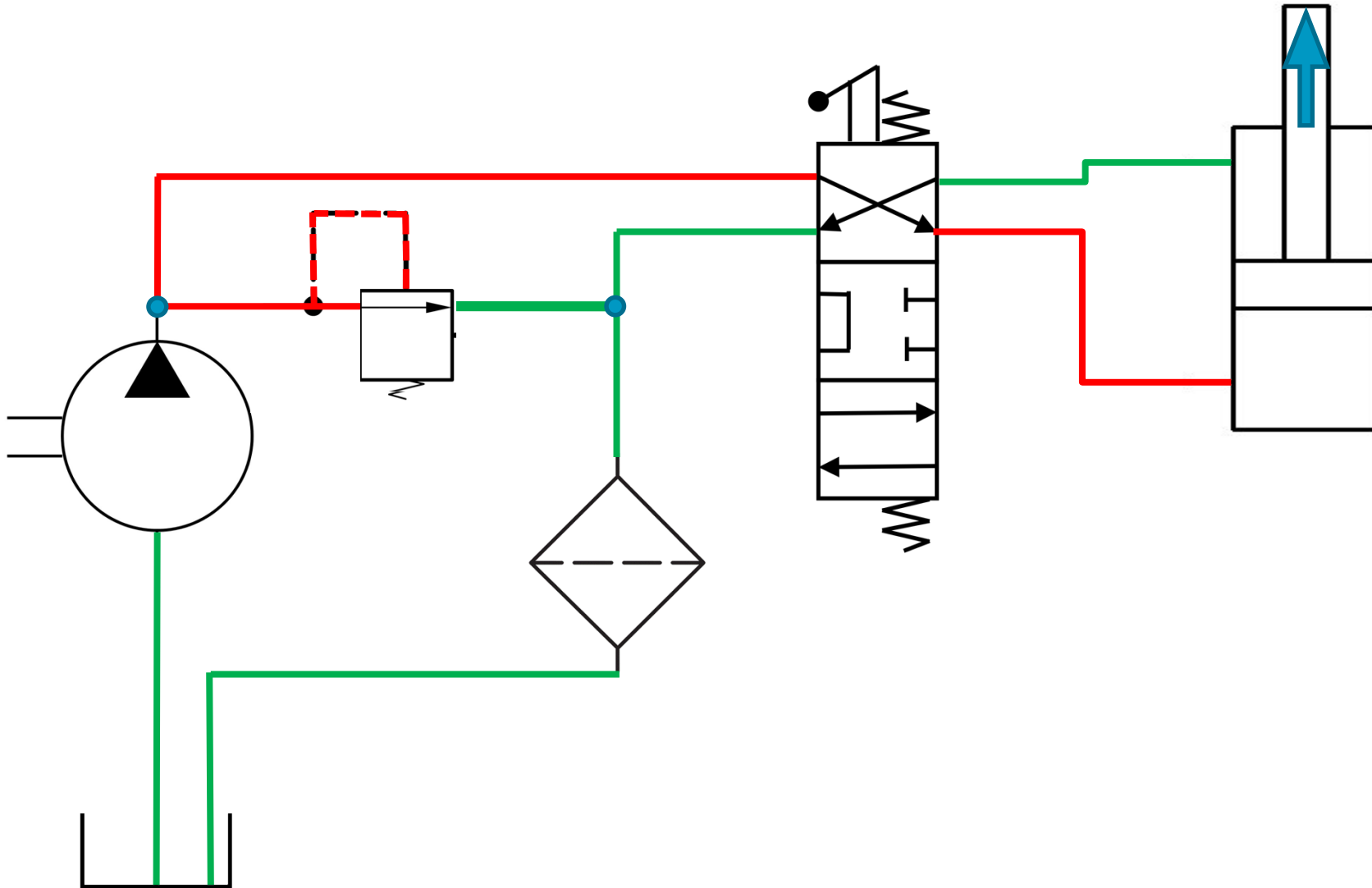


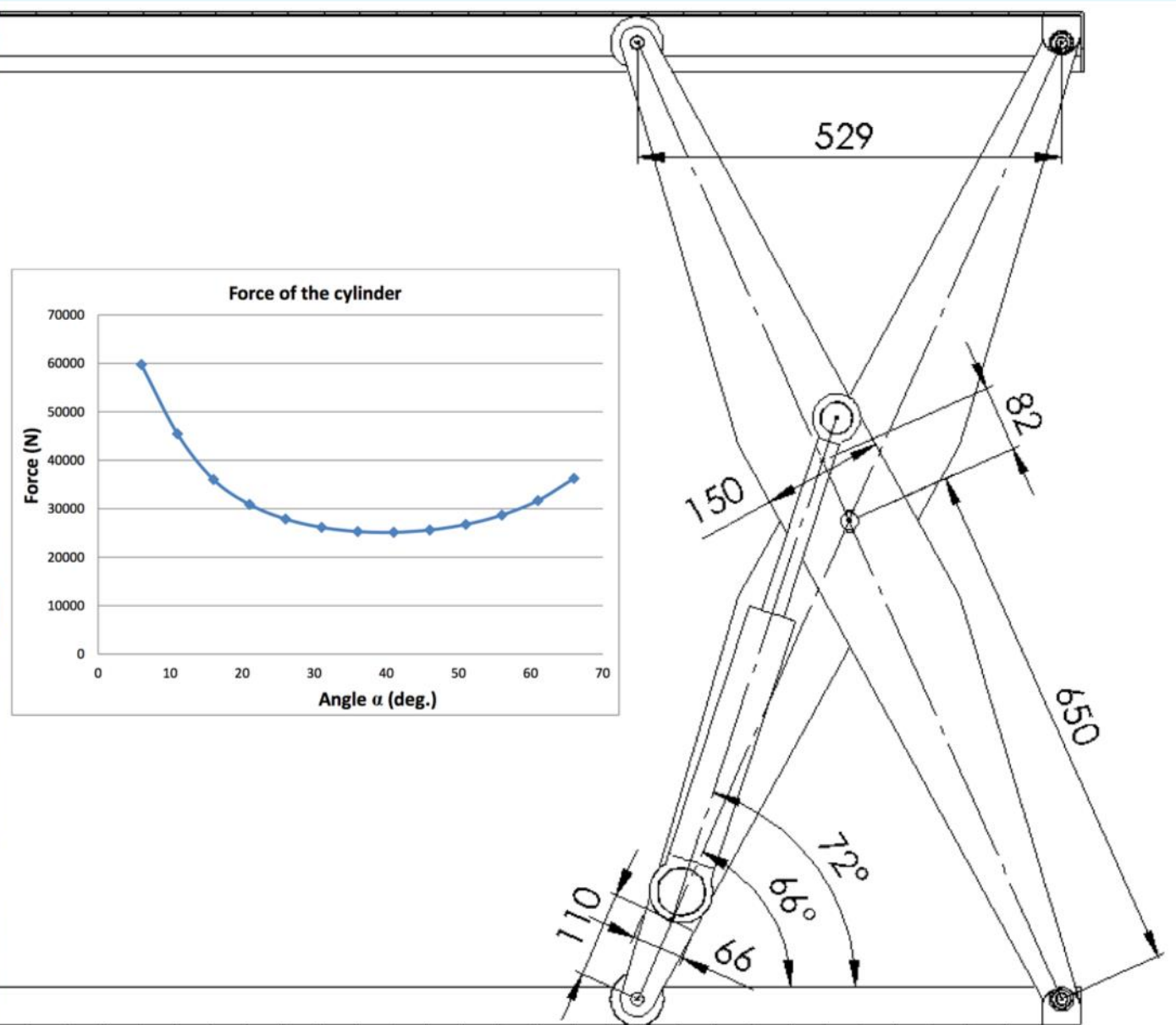


# Session 7 – Hydraulic Principles – Cylinder Extend

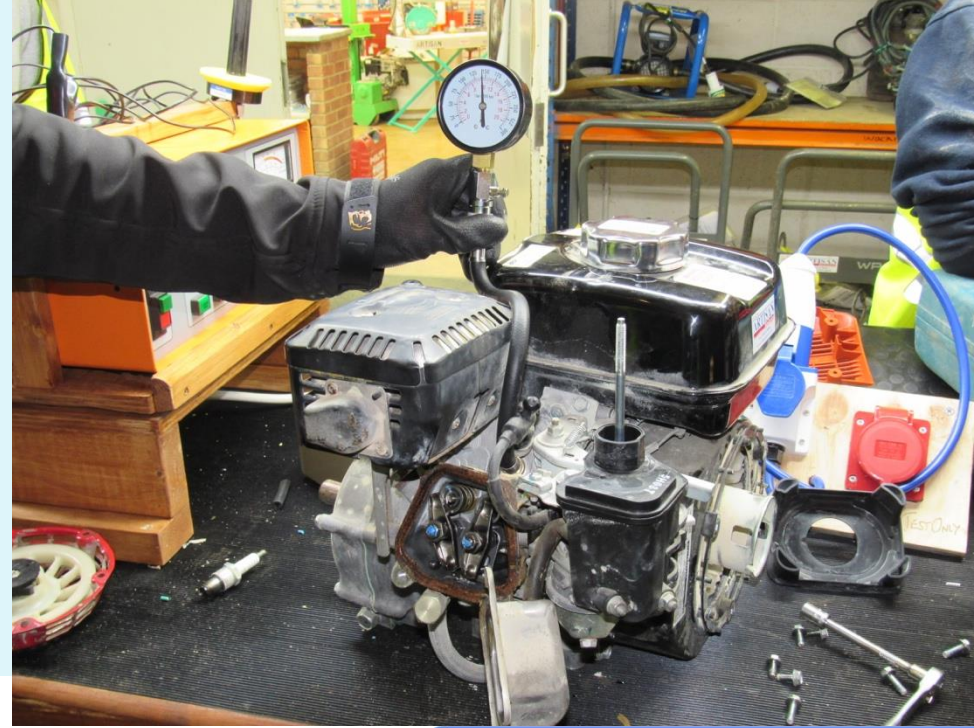
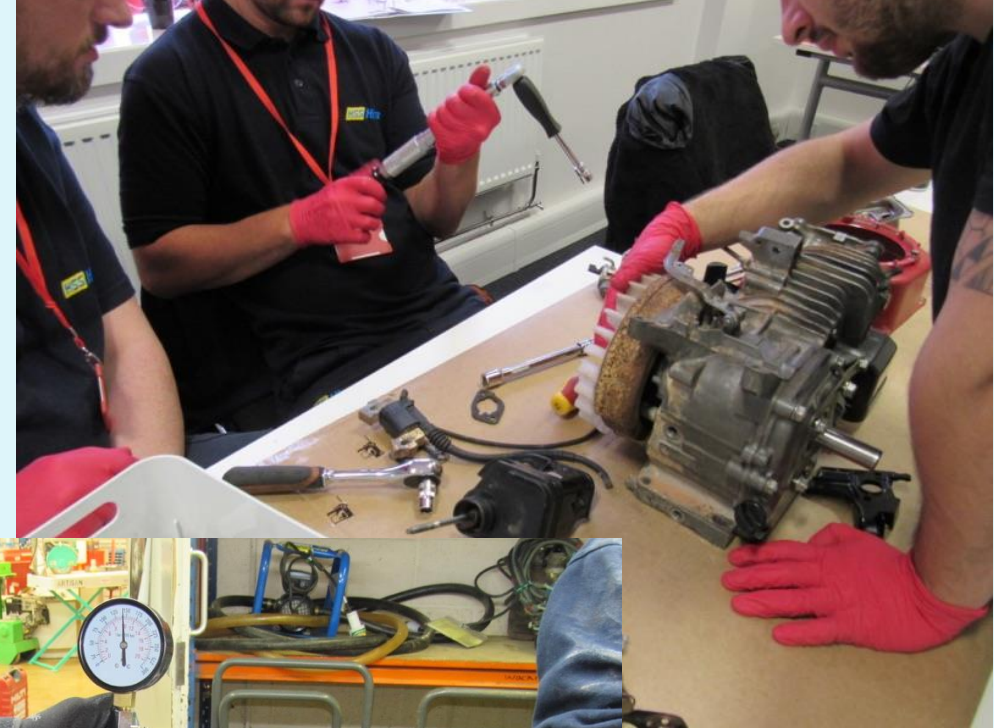


## Session 7 – Hydraulic Principles – End of Stroke / Overload







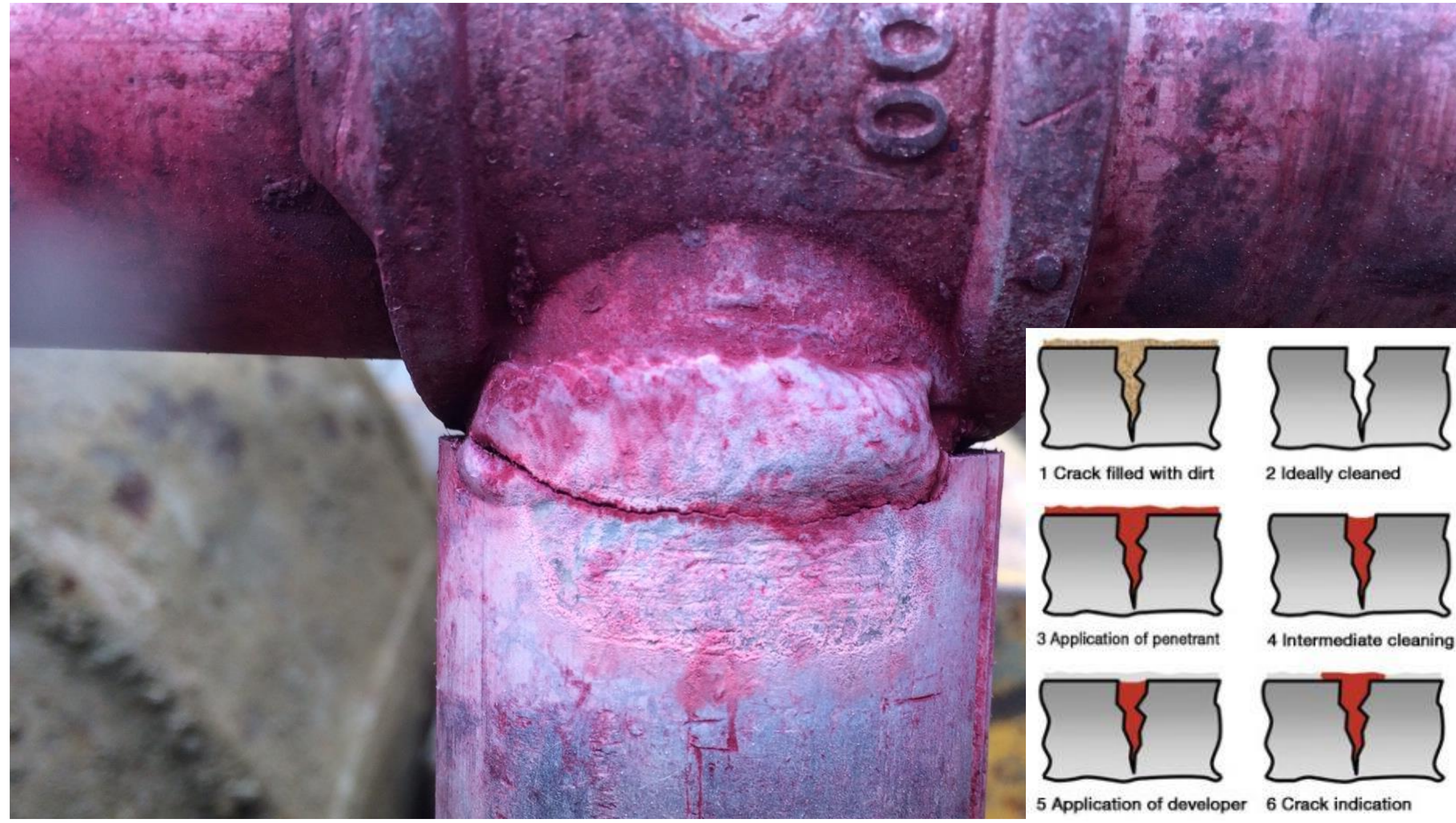


**LearningforHireLtd**

Training, Assessment & Compliance







1 Crack filled with dirt



2 Ideally cleaned



3 Application of penetrant



4 Intermediate cleaning



5 Application of developer



6 Crack indication

# Opportunity to Get Involved

**LearningforHireLtd**

Training, Assessment & Compliance



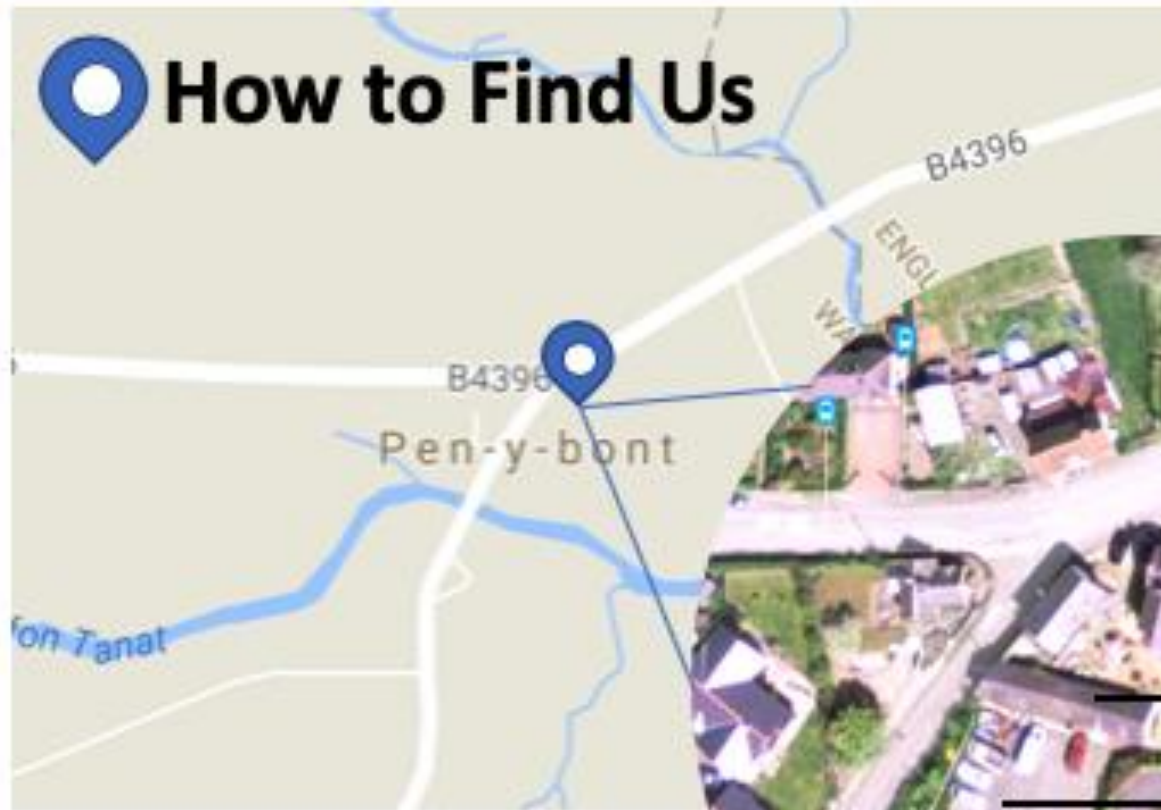
**Member**



## How to Find Us

**TrainingforHireLtd**

**TrainersArms**



**Pen-Y-Bont  
OSWESTRY  
SY10 9JQ**

**Penybont Inn**

**Trainers Arms**

**Car Park**

**Tel: 01691 828243**

**LearningforHireLtd**

Training, Assessment & Compliance



**Member**