

Big Booms

XC | XTRA
CAPACITY

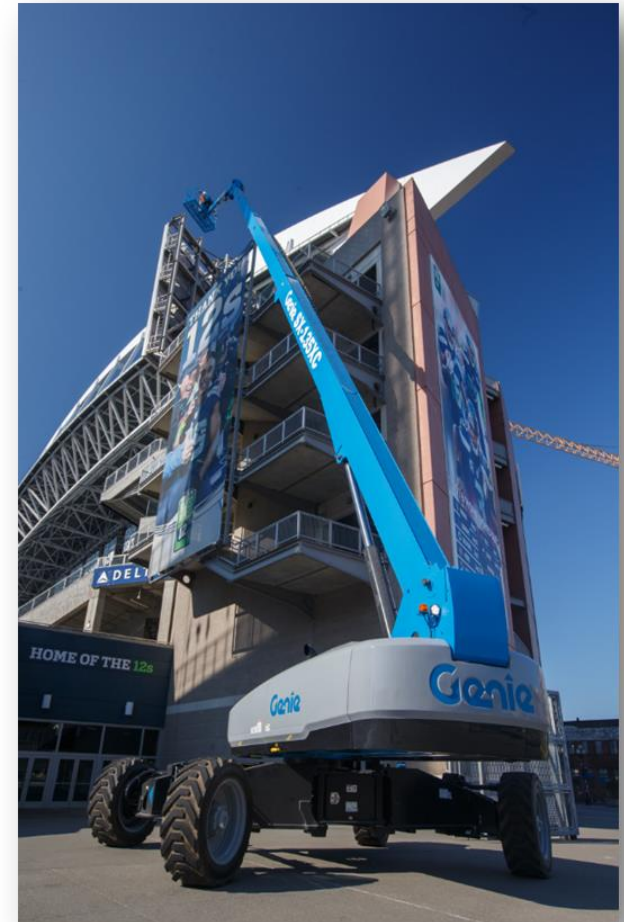


Genie®
A TEREX BRAND

TAKING YOU **HIGHER**™

Why Big Booms

- ME is a big booms market
- Oil & Gas, construction, Power Generation...
- Big investment, high ROI, Long term hires, high productivity.
- Requires well trained operators



Challenges with big booms

1. Transportation
2. Down time
3. Calibration
4. Safety



What is Genie solution

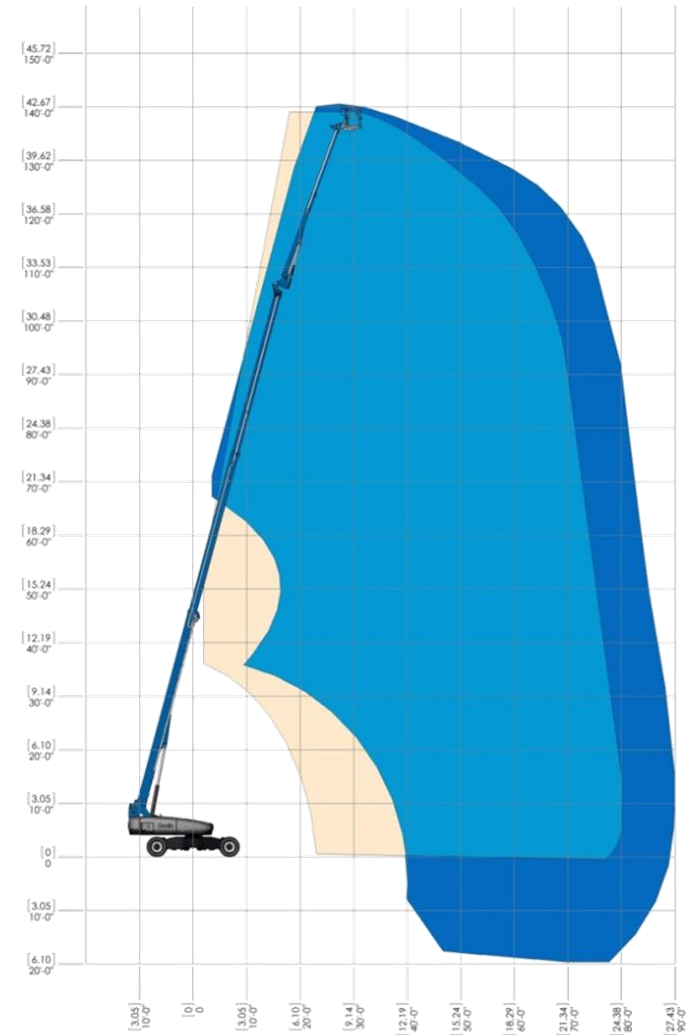
- Serviceability
- High capacity (xtra capacity)
- New load sense
- New operating system



1. Standard maintenance protocols for different machine ranges such as booms and scissors.
2. Increased service intervals. Genie always monitors the machines in the field and makes timely changes to service intervals of different components. One good example is the boom extension rope replacement interval which we extended from 7 years to 10 and later to 12 years.
3. Scheduled service parts kits.
4. All maintenance related information with detailed procedures available in one single document for different product ranges. One manual for booms, one manual for scissors etc.

Xtra capacity

- The new Genie philosophy for all our booms
- Unrestricted ROM lift capacity: 2 Person, 660lbs/300kg
- Restricted ROM lift capacity: 3 Person, 1000lbs/454kg
- SX135 XC, SX125 XC, SX105 XC, S85 XC, Z 45 XC
- 32% increase in standard platform capacity

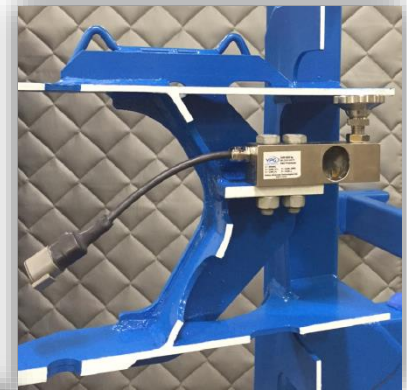


New Load Sense System

Load Sense (Next Gen)

- A new requirement in North America
- Continually monitors the load in the platform, automatically selecting the proper (max range of motion or max capacity) envelope based on payload
 - All boom functions will be interrupted if the rated load is exceeded in either zone
- Robust, Reliable, and Accurate design
 - Extensively tested for both field usage and intensive transport loading
 - Designed with no moving parts, eliminating wear and inaccuracy and reducing failures
 - Zero Load field calibration, no need for large/unwieldy test weights to recover from loss of calibration in the field

Load Cell and Platform support cutaway

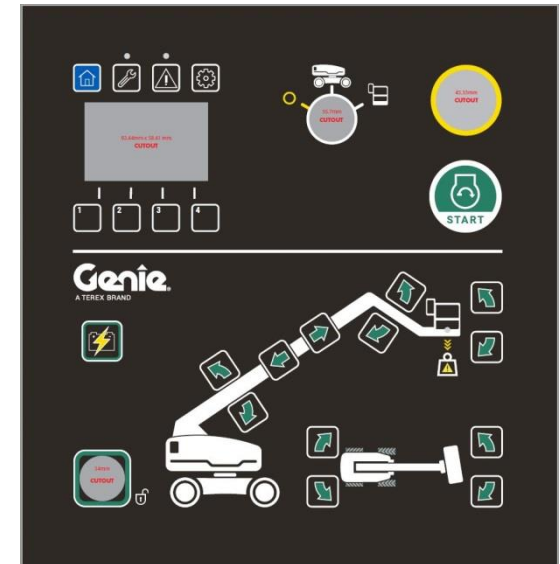


Platform support and Load Sense system installation



Boom Controls: ALC-600 Scope

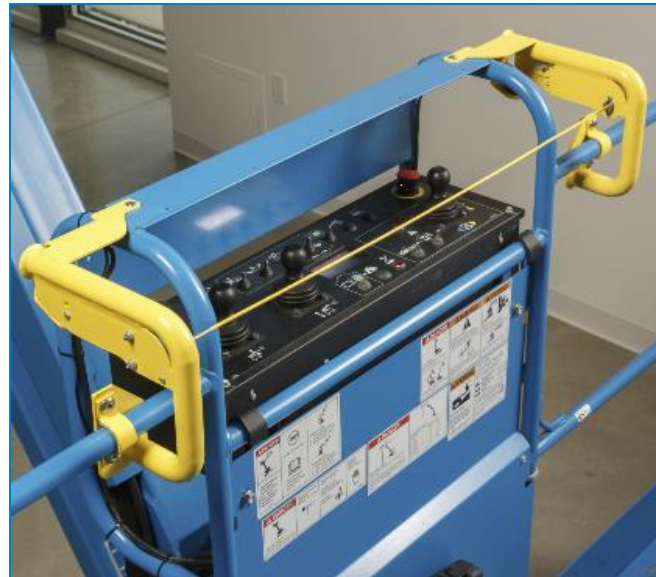
- Three controllers TCON, PCON and Display Controller
- Boom angle sensor – precise boom position monitoring. Smooth operation and precise envelope control.
- New Display (Display controller) at ground control, through which machine settings can be made, various operational parameters can be monitored, just like ALC1000 system.
- USB port for programming.
- New universal tilt sensor for turn table level for extended safety.
- At the platform, we have a new feature of joysticks getting continuously calibrated, similar to Plus 1 system.
- ALC600 has connectivity with the new Genie Handheld device, TechPro Link and using this the parameters can be set 'on the go' from the platform.



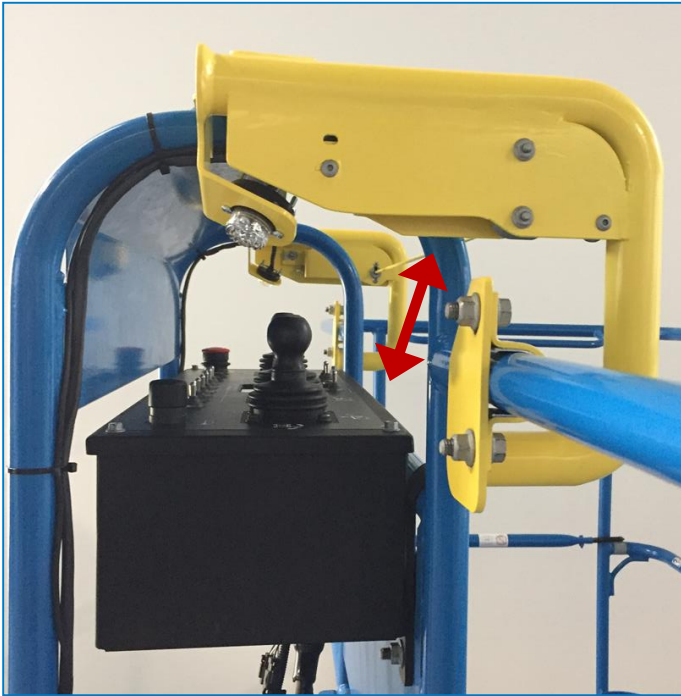
Lift Guard Contact Alarm

What is it?

- Genie is launching a new electronic secondary guarding system designed activate before an operator makes contact with the platform control panel and alert ground personnel. It replaces Operator Protective Alarm, or OPA.
- It fits on Genie S and Z booms back to 2002. GR-26J and TZs are not included.



Lift Guard Contact Alarm



A free-movement zone exists between the activation cable and control box which allows operator mobility after system activation.

How does it work?

- An activation cable is located across the platform control box. When pressure is applied to the cable, it will disconnect a magnetic switch.
- When the system is activated, all machine motion is stopped. An alarm sounds and beacons flash. The ground controls remain active. The engine (if equipped) will still run.
- The system is active while the footswitch is being depressed.
- To reset the system, simply click the cable back into the anchor point. No need to cycle the e-stop or restart the engine.

Thank you



Genie[®]
A TEREX BRAND

TAKING
YOU **HIGHER**[™]